

Anti-Phospho-RAD52-Tyr104 antibody (40-120) (STJ90918)

STJ90918

GENERAL INFORMATION

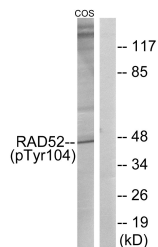
Product Type	Primary antibodies
Short Description	Rabbit polyclonal antibody anti-Phospho-Dna Repair Protein Rad52 Homolog-Tyr104 (40-120) is suitable for use in Western Blot, Immunohistochemistry, Immunofluorescence and ELISA research applications.
Applications	WB, IHC-P, IF-P, ELISA
Host/Source	Rabbit
Reactivity	Human, Mouse, Monkey

PRODUCT PROPERTIES

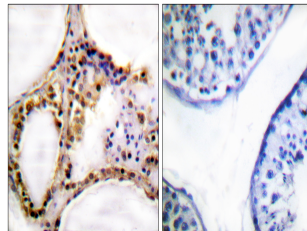
Clonality	Polyclonal
Clone ID	
Concentration	1 mg/mL
Conjugation	Unconjugated
Purification	The antibody was affinity-purified from rabbit anti-serum by affinity-chromatography.
Dilution Range	WB 1:500-1:2000 IHC 1:100-1:300 ELISA 1:20000
Formulation	PBS, 50% Glycerol, 0.5% BSA and 0.02% Sodium Azide.
Isotype	IgG
Storage Instruction	Store at -20°C for up to 1 year from the date of receipt, and avoid repeat freeze-thaw cycles.

TARGET INFORMATION

Gene ID	5893
Gene Symbol	RAD52
Uniprot ID	RAD52_HUMAN
Immunogen	The antiserum was produced against synthesized peptide derived from human RAD52 around the phosphorylation site of Tyr104 at amino acid range 70-119
Immunogen Region	40-120
Specificity	Phospho-RAD52-Tyr104 polyclonal antibody (Dna Repair Protein Rad52 Homolog) binds to endogenous Dna Repair Protein Rad52 Homolog at the amino acid region 40-120 only when phosphorylated at Tyr104.
Immunogen Sequence	



Western blot analysis of lysates from COS7 cells treated with H₂O₂ 100μM 30', using RAD52 (Phospho-Tyr104) Antibody. The lane on the right is blocked with the phospho peptide.



Immunohistochemistry analysis of paraffin-embedded human testis, using RAD52 (Phospho-Tyr104) Antibody. The picture on the right is blocked with the phospho peptide.

This product is suitable for in-vitro studies under the RESEARCH USE ONLY [RUO] licence. This product must not be used as for diagnostic or other medical purposes.
St John's Laboratory Ltd, Knowledge Dock Business Centre, University Way, London, E16 2RD | Tel: 0208 223 3081