

## Anti-Phospho-PAK1-Ser199 antibody (140-220) (STJ90917)

STJ90917

### GENERAL INFORMATION

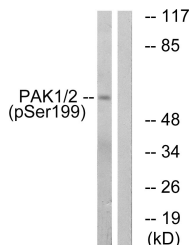
<b>Product Type</b>	Primary antibodies
<b>Short Description</b>	Rabbit polyclonal antibody anti-Phospho-Serine/Threonine-Protein Kinase Pak 1-Ser199 (140-220) is suitable for use in Western Blot, Immunohistochemistry, Immunofluorescence and ELISA research applications.
<b>Applications</b>	WB, IHC-P, IF-P, ELISA
<b>Host/Source</b>	Rabbit
<b>Reactivity</b>	Human, Mouse, Rat, Monkey

### PRODUCT PROPERTIES

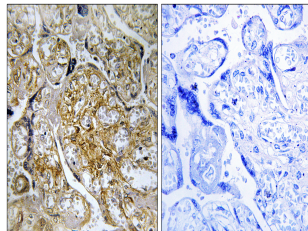
<b>Clonality</b>	Polyclonal
<b>Clone ID</b>	
<b>Concentration</b>	1 mg/mL
<b>Conjugation</b>	Unconjugated
<b>Purification</b>	The antibody was affinity-purified from rabbit anti-serum by affinity-chromatography.
<b>Dilution</b>	WB 1:500-1:2000
<b>Range</b>	IHC 1:100-1:300 ELISA 1:10000
<b>Formulation</b>	PBS, 50% Glycerol, 0.5% BSA and 0.02% Sodium Azide.
<b>Isotype</b>	IgG
<b>Storage Instruction</b>	Store at -20°C for up to 1 year from the date of receipt, and avoid repeat freeze-thaw cycles.

### TARGET INFORMATION

<b>Gene ID</b>	5058
<b>Gene Symbol</b>	PAK1
<b>Uniprot ID</b>	PAK1_HUMAN
<b>Immunogen</b>	The antiserum was produced against synthesized peptide derived from human PAK1 around the phosphorylation site of Ser199 at amino acid range 165-214
<b>Immunogen Region</b>	140-220
<b>Specificity</b>	Phospho-PAK1-Ser199 polyclonal antibody (Serine/Threonine-Protein Kinase Pak 1) binds to endogenous Serine/Threonine-Protein Kinase Pak 1 at the amino acid region 140-220 only when phosphorylated at Ser199.
<b>Immunogen Sequence</b>	



Western blot analysis of lysates from LOVO cells treated with starved 24h, using PAK1 (Phospho-Ser199) Antibody. The lane on the right is blocked with the phospho peptide.



Immunohistochemistry analysis of paraffin-embedded human placenta, using PAK1 (Phospho-Ser199) Antibody. The picture on the right is blocked with the phospho peptide.