

Anti-Phospho-ITGB4-Tyr1510 antibody (1450-1530) (STJ90915)

STJ90915

GENERAL INFORMATION

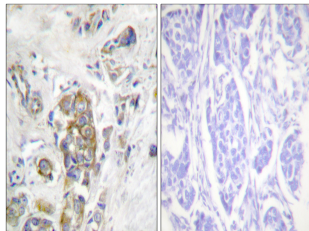
Product Type	Primary antibodies
Short Description	Rabbit polyclonal antibody anti-Phospho-Integrin Beta-4-Tyr1510 (1450-1530) is suitable for use in Western Blot, Immunohistochemistry, Immunofluorescence and ELISA research applications.
Applications	WB, IHC-P, IF-P, ELISA
Host/Source	Rabbit
Reactivity	Human, Mouse, Rat

PRODUCT PROPERTIES

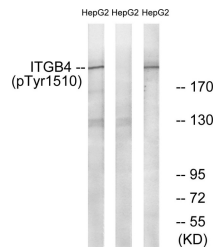
Clonality	Polyclonal
Clone ID	
Concentration	1 mg/mL
Conjugation	Unconjugated
Purification	The antibody was affinity-purified from rabbit anti-serum by affinity-chromatography.
Dilution Range	WB 1:500-1:2000 IHC 1:100-1:300 ELISA 1:10000
Formulation	PBS, 50% Glycerol, 0.5% BSA and 0.02% Sodium Azide.
Isotype	IgG
Storage Instruction	Store at -20°C for up to 1 year from the date of receipt, and avoid repeat freeze-thaw cycles.

TARGET INFORMATION

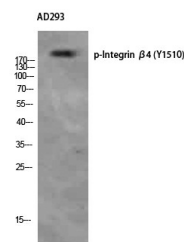
Gene ID	3691
Gene Symbol	ITGB4
Uniprot ID	ITB4_HUMAN
Immunogen	The antiserum was produced against synthesized peptide derived from human ITGB4 around the phosphorylation site of Tyr1510 at amino acid range 1481-1530
Immunogen Region	1450-1530
Specificity	Phospho-ITGB4-Tyr1510 polyclonal antibody (Integrin Beta-4) binds to endogenous Integrin Beta-4 at the amino acid region 1450-1530 only when phosphorylated at Tyr1510.
Immunogen Sequence	



Immunohistochemistry analysis of paraffin-embedded human breast carcinoma, using ITGB4 (Phospho-Tyr1510) Antibody. The picture on the right is blocked with the phospho peptide.



Western blot analysis of lysates from HepG2 cells treated with Na_2VO_3 0.3nM 40', using ITGB4 (Phospho-Tyr1510) Antibody. The lane on the right is blocked with the phospho peptide.



Western blot analysis of AD293 using Phospho-Integrin Beta 4 (Y1510) Polyclonal Antibody. Antibody was diluted at 1:500

This product is suitable for in-vitro studies under the RESEARCH USE ONLY [RUO] licence. This product must not be used as for diagnostic or other medical purposes.
St John's Laboratory Ltd, Knowledge Dock Business Centre, University Way, London, E16 2RD | Tel: 0208 223 3081