

Anti-Phospho-HNRNPC-Ser260 antibody (200-280) (STJ90910)

STJ90910

GENERAL INFORMATION

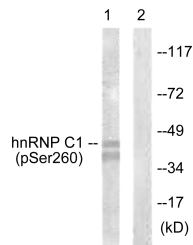
| | |
|--------------------------|--|
| Product Type | Primary antibodies |
| Short Description | Rabbit polyclonal antibody anti-Phospho-Heterogeneous Nuclear Ribonucleoproteins C1/C2-Ser260 (200-280) is suitable for use in Western Blot, Immunohistochemistry, Immunofluorescence and ELISA research applications. |
| Applications | WB, IHC-P, IF-P, ELISA |
| Host/Source | Rabbit |
| Reactivity | Human, Mouse, Rat |

PRODUCT PROPERTIES

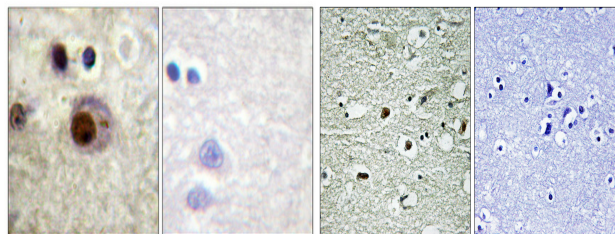
| | |
|----------------------------|--|
| Clonality | Polyclonal |
| Clone ID | |
| Concentration | 1 mg/mL |
| Conjugation | Unconjugated |
| Purification | The antibody was affinity-purified from rabbit anti-serum by affinity-chromatography. |
| Dilution Range | WB 1:500-1:2000 IHC 1:100-1:300 ELISA 1:20000 |
| Formulation | PBS, 50% Glycerol, 0.5% BSA and 0.02% Sodium Azide. |
| Isotype | IgG |
| Storage Instruction | Store at -20°C for up to 1 year from the date of receipt, and avoid repeat freeze-thaw cycles. |

TARGET INFORMATION

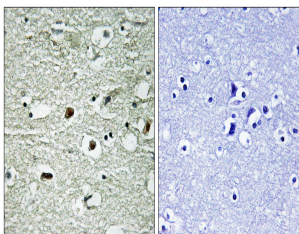
| | |
|---------------------------|--|
| Gene ID | 3183 |
| Gene Symbol | HNRNPC |
| Uniprot ID | HNRNPC_HUMAN |
| Immunogen | The antiserum was produced against synthesized peptide derived from human hnRNP C1/2 around the phosphorylation site of Ser260 at amino acid range 231-280 |
| Immunogen Region | 200-280 |
| Specificity | Phospho-HNRNPC-Ser260 polyclonal antibody (Heterogeneous Nuclear Ribonucleoproteins C1/C2) binds to endogenous Heterogeneous Nuclear Ribonucleoproteins C1/C2 at the amino acid region 200-280 only when phosphorylated at Ser260. |
| Immunogen Sequence | |



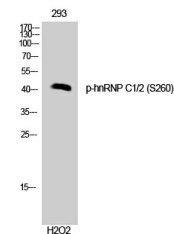
Western blot analysis of lysates from 293 cells treated with H₂O₂ 100µM 15', using hnRNP C1/2 (Phospho-Ser260) Antibody. The lane on the right is blocked with the phospho peptide.



Immunohistochemical analysis of paraffin-embedded Human brain. Antibody was diluted at 1:100 (4°C overnight). High-pressure and temperature Tris-EDTA, pH8.0 was used for antigen retrieval. Negative control (right) obtained from antibody was pre-absorbed by immunogen peptide.



Immunohistochemistry analysis of paraffin-embedded human brain, using hnRNP C1/2 (Phospho-Ser260) Antibody. The picture on the right is blocked with the phospho peptide.



Western blot analysis of 293 cells using Phospho-hnRNP C1/2 (S260) Polyclonal Antibody cells nucleus extracted by Minute TM Cytoplasmic and Nuclear Fractionation kit (SC-003, Inventiotech, MN, USA).