

Anti-Phospho-SMAD1-Ser187 antibody (130-210) (STJ90904)

STJ90904

GENERAL INFORMATION

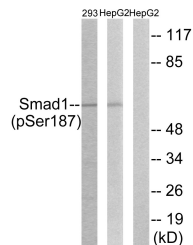
Product Type	Primary antibodies
Short Description	Rabbit polyclonal antibody anti-Phospho-Mothers Against Decapentaplegic Homolog 1-Ser187 (130-210) is suitable for use in Western Blot, Immunohistochemistry, Immunofluorescence and ELISA research applications.
Applications	WB, IHC-P, IF-P, ELISA
Host/Source	Rabbit
Reactivity	Human, Mouse, Monkey

PRODUCT PROPERTIES

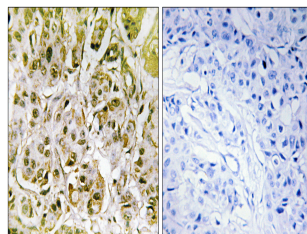
Clonality	Polyclonal
Clone ID	
Concentration	1 mg/mL
Conjugation	Unconjugated
Purification	The antibody was affinity-purified from rabbit anti-serum by affinity-chromatography.
Dilution Range	WB 1:500-1:2000 IHC 1:100-1:300 ELISA 1:10000
Formulation	PBS, 50% Glycerol, 0.5% BSA and 0.02% Sodium Azide.
Isotype	IgG
Storage Instruction	Store at 20°C for up to 1 year from the date of receipt, and avoid repeat freeze-thaw cycles.

TARGET INFORMATION

Gene ID	4086
Gene Symbol	SMAD1
Uniprot ID	SMAD1_HUMAN
Immunogen	The antiserum was produced against synthesized peptide derived from human Smad1 around the phosphorylation site of Ser187 at amino acid range 153-202
Immunogen Region	130-210
Specificity	Phospho-SMAD1-Ser187 polyclonal antibody (Mothers Against Decapentaplegic Homolog 1) binds to endogenous Mothers Against Decapentaplegic Homolog 1 at the amino acid region 130-210 only when phosphorylated at Ser187.
Immunogen Sequence	



Western blot analysis of lysates from 293 cells and HepG2 cells, using Smad1 (Phospho-Ser187) Antibody. The lane on the right is blocked with the phospho peptide.



Immunohistochemistry analysis of paraffin-embedded human breast carcinoma, using Smad1 (Phospho-Ser187) Antibody. The picture on the right is blocked with the phospho peptide.

This product is suitable for in-vitro studies under the RESEARCH USE ONLY [RUO] licence. This product must not be used as for diagnostic or other medical purposes.
St John's Laboratory Ltd, Knowledge Dock Business Centre, University Way, London, E16 2RD | Tel: 0208 223 3081