

Anti-Phospho-F3-Ser290 antibody (220-300) (STJ90893)

STJ90893

GENERAL INFORMATION

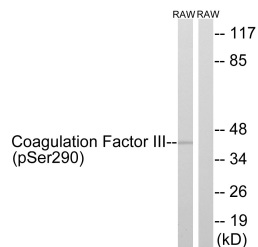
Product Type	Primary antibodies
Short Description	Rabbit polyclonal antibody anti-Phospho-Tissue Factor-Ser290 (220-300) is suitable for use in Western Blot, Immunohistochemistry, Immunofluorescence and ELISA research applications.
Applications	WB, IHC-P, IF-P, ELISA
Host/Source	Rabbit
Reactivity	Human, Rat, Mouse

PRODUCT PROPERTIES

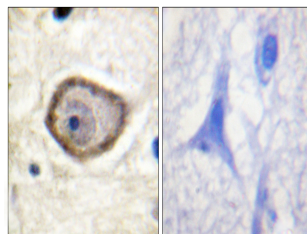
Clonality	Polyclonal
Clone ID	
Concentration	1 mg/mL
Conjugation	Unconjugated
Purification	The antibody was affinity-purified from rabbit anti-serum by affinity-chromatography.
Dilution Range	WB 1:500-1:2000 IHC 1:100-1:300 ELISA 1:20000
Formulation	PBS, 50% Glycerol, 0.5% BSA and 0.02% Sodium Azide.
Isotype	IgG
Storage Instruction	Store at -20°C for up to 1 year from the date of receipt, and avoid repeat freeze-thaw cycles.

TARGET INFORMATION

Gene ID	2152
Gene Symbol	F3
Uniprot ID	TF_HUMAN
Immunogen	The antiserum was produced against synthesized peptide derived from human Coagulation Factor III around the phosphorylation site of Ser290 at amino acid range 246-295
Immunogen Region	220-300
Specificity	Phospho-F3-Ser290 polyclonal antibody (Tissue Factor) binds to endogenous Tissue Factor at the amino acid region 220-300 only when phosphorylated at Ser290.
Immunogen Sequence	



Western blot analysis of lysates from RAW264.7 cells treated with TNF 20ng/ml 30', using Coagulation Factor III (Phospho-Ser290) Antibody. The lane on the right is blocked with the phospho peptide.



Immunohistochemistry analysis of paraffin-embedded human brain, using Coagulation Factor III (Phospho-Ser290) Antibody. The picture on the right is blocked with the phospho peptide.

This product is suitable for in-vitro studies under the RESEARCH USE ONLY [RUO] licence. This product must not be used as for diagnostic or other medical purposes.
St John's Laboratory Ltd, Knowledge Dock Business Centre, University Way, London, E16 2RD | Tel: 0208 223 3081