

Anti-Phospho-CDK7-Thr170 antibody (110-190) (STJ90891)

STJ90891

GENERAL INFORMATION

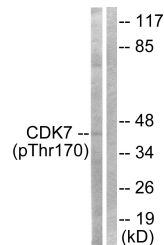
Product Type	Primary antibodies
Short Description	Rabbit polyclonal antibody anti-Phospho-Cyclin-Dependent Kinase 7-Thr170 (110-190) is suitable for use in Western Blot, Immunohistochemistry, Immunofluorescence and ELISA research applications.
Applications	WB, IHC-P, IF-P, ELISA
Host/Source	Rabbit
Reactivity	Human, Mouse

PRODUCT PROPERTIES

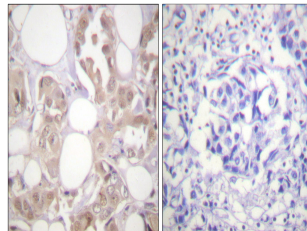
Clonality	Polyclonal
Clone ID	
Concentration	1 mg/mL
Conjugation	Unconjugated
Purification	The antibody was affinity-purified from rabbit anti-serum by affinity-chromatography.
Dilution Range	WB 1:500-1:2000 IHC 1:100-1:300 ELISA 1:20000
Formulation	PBS, 50% Glycerol, 0.5% BSA and 0.02% Sodium Azide.
Isotype	IgG
Storage Instruction	Store at -20°C for up to 1 year from the date of receipt, and avoid repeat freeze-thaw cycles.

TARGET INFORMATION

Gene ID	1022
Gene Symbol	CDK7
Uniprot ID	CDK7_HUMAN
Immunogen	The antiserum was produced against synthesized peptide derived from human CDK7 around the phosphorylation site of Thr170 at amino acid range 136-185
Immunogen Region	110-190
Specificity	Phospho-CDK7-Thr170 polyclonal antibody (Cyclin-Dependent Kinase 7) binds to endogenous Cyclin-Dependent Kinase 7 at the amino acid region 110-190 only when phosphorylated at Thr170.
Immunogen Sequence	



Western blot analysis of lysates from HeLa cells treated with Calyculin A 50nM 30' using CDK7 (Phospho-Thr170) Antibody. The lane on the right is blocked with the phospho peptide.



Immunohistochemistry analysis of paraffin-embedded human breast carcinoma, using CDK7 (Phospho-Thr170) Antibody. The picture on the right is blocked with the phospho peptide.

This product is suitable for in-vitro studies under the RESEARCH USE ONLY [RUO] licence. This product must not be used as for diagnostic or other medical purposes.
St John's Laboratory Ltd, Knowledge Dock Business Centre, University Way, London, E16 2RD | Tel: 0208 223 3081