

Anti-Phospho-CDC25B-Ser353 antibody (290-370) (STJ90890)

STJ90890

GENERAL INFORMATION

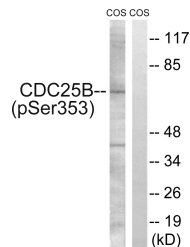
Product Type	Primary antibodies
Short Description	Rabbit polyclonal antibody anti-Phospho-M-Phase Inducer Phosphatase 2-Ser353 (290-370) is suitable for use in Western Blot, Immunohistochemistry, Immunofluorescence and ELISA research applications.
Applications	WB, IHC-P, IF-P, ELISA
Host/Source	Rabbit
Reactivity	Human, Monkey

PRODUCT PROPERTIES

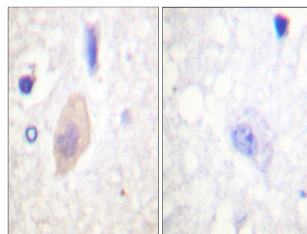
Clonality	Polyclonal
Clone ID	
Concentration	1 mg/mL
Conjugation	Unconjugated
Purification	The antibody was affinity-purified from rabbit anti-serum by affinity-chromatography.
Dilution Range	WB 1:500-1:2000 IHC 1:100-1:300 ELISA 1:40000
Formulation	PBS, 50% Glycerol, 0.5% BSA and 0.02% Sodium Azide.
Isotype	IgG
Storage Instruction	Store at 20°C for up to 1 year from the date of receipt, and avoid repeat freeze-thaw cycles.

TARGET INFORMATION

Gene ID	994
Gene Symbol	CDC25B
Uniprot ID	MPIP2_HUMAN
Immunogen	The antiserum was produced against synthesized peptide derived from human CDC25B around the phosphorylation site of Ser353 at amino acid range 319-368
Immunogen Region	290-370
Specificity	Phospho-CDC25B-Ser353 polyclonal antibody (M-Phase Inducer Phosphatase 2) binds to endogenous M-Phase Inducer Phosphatase 2 at the amino acid region 290-370 only when phosphorylated at Ser353.
Immunogen Sequence	



Western blot analysis of lysates from COS7 cells treated with etoposide 25µM 24h, using CDC25B (Phospho-Ser353) Antibody. The lane on the right is blocked with the phospho peptide.



Immunohistochemistry analysis of paraffin-embedded human brain, using CDC25B (Phospho-Ser353) Antibody. The picture on the right is blocked with the phospho peptide.

This product is suitable for in-vitro studies under the RESEARCH USE ONLY [RUO] licence. This product must not be used as for diagnostic or other medical purposes.
St John's Laboratory Ltd, Knowledge Dock Business Centre, University Way, London, E16 2RD | Tel: 0208 223 3081