

Anti-Phospho-TFRC-Ser24 antibody (10-90) (STJ90889)

STJ90889

GENERAL INFORMATION

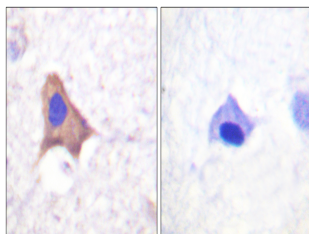
Product Type	Primary antibodies
Short Description	Rabbit polyclonal antibody anti-Phospho-Transferrin Receptor Protein 1-Ser24 (10-90) is suitable for use in Western Blot, Immunohistochemistry, Immunofluorescence and ELISA research applications.
Applications	WB, IHC-P, IF-P, ELISA
Host/Source	Rabbit
Reactivity	Human, Mouse

PRODUCT PROPERTIES

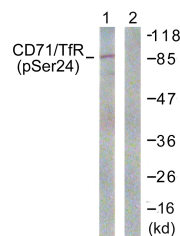
Clonality	Polyclonal
Clone ID	
Concentration	1 mg/mL
Conjugation	Unconjugated
Purification	The antibody was affinity-purified from rabbit anti-serum by affinity-chromatography.
Dilution	WB 1:500-1:2000
Range	IHC 1:100-1:300 ELISA 1:10000
Formulation	PBS, 50% Glycerol, 0.5% BSA and 0.02% Sodium Azide.
Isotype	IgG
Storage Instruction	Store at -20°C for up to 1 year from the date of receipt, and avoid repeat freeze-thaw cycles.

TARGET INFORMATION

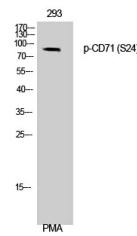
Gene ID	7037
Gene Symbol	TFRC
Uniprot ID	TFR1_HUMAN
Immunogen	The antiserum was produced against synthesized peptide derived from human CD71/TfR around the phosphorylation site of Ser24 at amino acid range 15-64
Immunogen Region	10-90
Specificity	Phospho-TFRC-Ser24 polyclonal antibody (Transferrin Receptor Protein 1) binds to endogenous Transferrin Receptor Protein 1 at the amino acid region 10-90 only when phosphorylated at Ser24.
Immunogen Sequence	



Immunohistochemistry analysis of paraffin-embedded human brain, using CD71/TfR (Phospho-Ser24) Antibody. The picture on the right is blocked with the phospho peptide.



Western blot analysis of lysates from 293 cells treated with PMA 125ng/ml 30', using CD71/TfR (Phospho-Ser24) Antibody. The lane on the right is blocked with the phospho peptide.



Western blot analysis of 293 cells using Phospho-CD71 (S24) Polyclonal Antibody

This product is suitable for in-vitro studies under the RESEARCH USE ONLY [RUO] licence. This product must not be used as for diagnostic or other medical purposes.
St John's Laboratory Ltd, Knowledge Dock Business Centre, University Way, London, E16 2RD | Tel: 0208 223 3081