

Anti-Phospho-APC-Ser2054 antibody (1990-2070) (STJ90884)

STJ90884

GENERAL INFORMATION

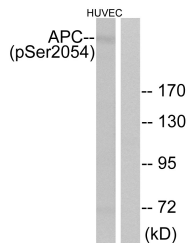
Product Type	Primary antibodies
Short Description	Rabbit polyclonal antibody anti-Phospho-Adenomatous Polyposis Coli Protein-Ser2054 (1990-2070) is suitable for use in Western Blot, Immunohistochemistry, Immunofluorescence and ELISA research applications.
Applications	WB, IHC-P, IF-P, ELISA
Host/Source	Rabbit
Reactivity	Human, Rat, Mouse

PRODUCT PROPERTIES

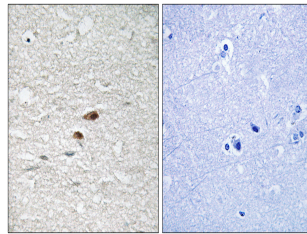
Clonality	Polyclonal
Clone ID	
Concentration	1 mg/mL
Conjugation	Unconjugated
Purification	The antibody was affinity-purified from rabbit anti-serum by affinity-chromatography.
Dilution Range	WB 1:500-1:2000 IHC 1:100-1:300 ELISA 1:40000
Formulation	PBS, 50% Glycerol, 0.5% BSA and 0.02% Sodium Azide.
Isotype	IgG
Storage Instruction	Store at 20°C for up to 1 year from the date of receipt, and avoid repeat freeze-thaw cycles.

TARGET INFORMATION

Gene ID	324
Gene Symbol	APC
Uniprot ID	APC_HUMAN
Immunogen	The antiserum was produced against synthesized peptide derived from human APC around the phosphorylation site of Ser2054 at amino acid range 2020-2069
Immunogen Region	1990-2070
Specificity	Phospho-APC-Ser2054 polyclonal antibody (Adenomatous Polyposis Coli Protein) binds to endogenous Adenomatous Polyposis Coli Protein at the amino acid region 1990-2070 only when phosphorylated at Ser2054.
Immunogen Sequence	



Western blot analysis of lysates from HUVEC cells treated with PMA 125ng/ml 30', using APC (Phospho-Ser2054) Antibody. The lane on the right is blocked with the phospho peptide.



Immunohistochemistry analysis of paraffin-embedded human brain, using APC (Phospho-Ser2054) Antibody. The picture on the right is blocked with the phospho peptide.

This product is suitable for in-vitro studies under the RESEARCH USE ONLY [RUO] licence. This product must not be used as for diagnostic or other medical purposes.
St John's Laboratory Ltd, Knowledge Dock Business Centre, University Way, London, E16 2RD | Tel: 0208 223 3081