

Anti-Phospho-PRKCQ-Ser695 antibody (630-710) (STJ90879)

STJ90879

GENERAL INFORMATION

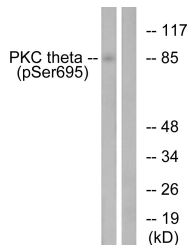
Product Type	Primary antibodies
Short Description	Rabbit polyclonal antibody anti-Phospho-Protein Kinase C Theta Type-Ser695 (630-710) is suitable for use in Western Blot, Immunohistochemistry, Immunofluorescence and ELISA research applications.
Applications	WB, IHC-P, IF-P, ELISA
Host/Source	Rabbit
Reactivity	Human, Rat, Mouse

PRODUCT PROPERTIES

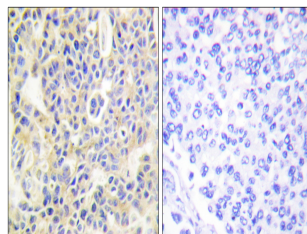
Clonality	Polyclonal
Clone ID	
Concentration	1 mg/mL
Conjugation	Unconjugated
Purification	The antibody was affinity-purified from rabbit anti-serum by affinity-chromatography.
Dilution Range	WB 1:500-1:2000 IHC 1:100-1:300 ELISA 1:5000
Formulation	PBS, 50% Glycerol, 0.5% BSA and 0.02% Sodium Azide.
Isotype	IgG
Storage Instruction	Store at -20°C for up to 1 year from the date of receipt, and avoid repeat freeze-thaw cycles.

TARGET INFORMATION

Gene ID	5588
Gene Symbol	PRKCQ
Uniprot ID	KPCT_HUMAN
Immunogen	The antiserum was produced against synthesized peptide derived from human PKC theta around the phosphorylation site of Ser695 at amino acid range 657-706
Immunogen Region	630-710
Specificity	Phospho-PRKCQ-Ser695 polyclonal antibody (Protein Kinase C Theta Type) binds to endogenous Protein Kinase C Theta Type at the amino acid region 630-710 only when phosphorylated at Ser695.
Immunogen Sequence	



Western blot analysis of lysates from Jurkat cells treated with EGF 200ng/ml 15' using PKC theta (Phospho-Ser695) Antibody. The lane on the right is blocked with the phospho peptide.



Immunohistochemistry analysis of paraffin-embedded human breast carcinoma, using PKC theta (Phospho-Ser695) Antibody. The picture on the right is blocked with the phospho peptide.

This product is suitable for in-vitro studies under the RESEARCH USE ONLY [RUO] licence. This product must not be used as for diagnostic or other medical purposes.
St John's Laboratory Ltd, Knowledge Dock Business Centre, University Way, London, E16 2RD | Tel: 0208 223 3081