

Anti-Phospho-BMX-Tyr566 antibody (510-590) (STJ90877)

STJ90877

GENERAL INFORMATION

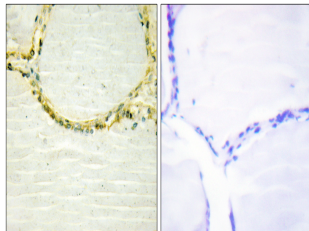
Product Type	Primary antibodies
Short Description	Rabbit polyclonal antibody anti-Phospho-Cytoplasmic Tyrosine-Protein Kinase Bmx-Tyr566 (510-590) is suitable for use in Western Blot, Immunohistochemistry, Immunofluorescence and ELISA research applications.
Applications	WB, IHC-P, IF-P, ELISA
Host/Source	Rabbit
Reactivity	Human, Mouse

PRODUCT PROPERTIES

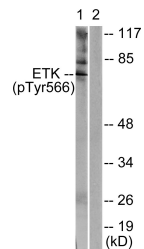
Clonality	Polyclonal
Clone ID	
Concentration	1 mg/mL
Conjugation	Unconjugated
Purification	The antibody was affinity-purified from rabbit anti-serum by affinity-chromatography.
Dilution Range	WB 1:500-1:2000 IHC 1:100-1:300 ELISA 1:10000
Formulation	PBS, 50% Glycerol, 0.5% BSA and 0.02% Sodium Azide.
Isotype	IgG
Storage Instruction	Store at -20°C for up to 1 year from the date of receipt, and avoid repeat freeze-thaw cycles.

TARGET INFORMATION

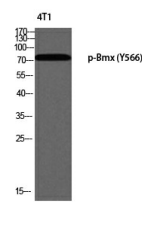
Gene ID	660
Gene Symbol	BMX
Uniprot ID	BMX_HUMAN
Immunogen	The antiserum was produced against synthesized peptide derived from human ETK around the phosphorylation site of Tyr566 at amino acid range 532-581
Immunogen Region	510-590
Specificity	Phospho-BMX-Tyr566 polyclonal antibody (Cytoplasmic Tyrosine-Protein Kinase Bmx) binds to endogenous Cytoplasmic Tyrosine-Protein Kinase Bmx at the amino acid region 510-590 only when phosphorylated at Tyr566.
Immunogen Sequence	



Immunohistochemistry analysis of paraffin-embedded human thyroid gland, using ETK (Phospho-Tyr566) Antibody. The picture on the right is blocked with the phospho peptide.



Western blot analysis of lysates from HeLa cells treated with Serum 20% 15', using ETK (Phospho-Tyr566) Antibody. The lane on the right is blocked with the phospho peptide.



Western blot analysis of 4T1 using p-Bmx (Y566) antibody.

This product is suitable for in-vitro studies under the RESEARCH USE ONLY [RUO] licence. This product must not be used as for diagnostic or other medical purposes.
St John's Laboratory Ltd, Knowledge Dock Business Centre, University Way, London, E16 2RD | Tel: 0208 223 3081