

Anti-Phospho-ADRB2-Ser355/S356 antibody (300-380) (STJ90872)

STJ90872

GENERAL INFORMATION

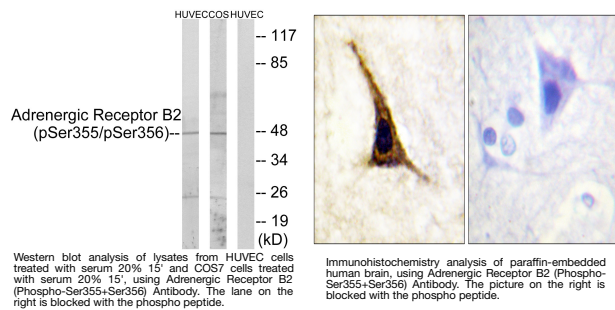
Product Type	Primary antibodies
Short Description	Rabbit polyclonal antibody anti-Phospho-Beta-2 Adrenergic Receptor-Ser355/S356 (300-380) is suitable for use in Western Blot, Immunohistochemistry, Immunofluorescence and ELISA research applications.
Applications	WB, IHC-P, IF-P, ELISA
Host/Source	Rabbit
Reactivity	Human, Mouse, Rat, Monkey

PRODUCT PROPERTIES

Clonality	Polyclonal
Clone ID	
Concentration	1 mg/mL
Conjugation	Unconjugated
Purification	The antibody was affinity-purified from rabbit anti-serum by affinity-chromatography.
Dilution Range	WB 1:500-1:2000 IHC 1:100-1:300 ELISA 1:10000
Formulation	PBS, 50% Glycerol, 0.5% BSA and 0.02% Sodium Azide.
Isotype	IgG
Storage Instruction	Store at -20°C for up to 1 year from the date of receipt, and avoid repeat freeze-thaw cycles.

TARGET INFORMATION

Gene ID	154
Gene Symbol	ADRB2
Uniprot ID	ADRB2_HUMAN
Immunogen	The antiserum was produced against synthesized peptide derived from human Adrenergic Receptor B2 around the phosphorylation site of Ser355 and Ser356 at amino acid range 331-380
Immunogen Region	300-380
Specificity	Phospho-ADRB2-Ser355/S356 polyclonal antibody (Beta-2 Adrenergic Receptor) binds to endogenous Beta-2 Adrenergic Receptor at the amino acid region 300-380 only when phosphorylated at Ser355/S356.
Immunogen Sequence	



This product is suitable for in-vitro studies under the RESEARCH USE ONLY [RUO] licence. This product must not be used as for diagnostic or other medical purposes.
 St John's Laboratory Ltd, Knowledge Dock Business Centre, University Way, London, E16 2RD | Tel: 0208 223 3081