

Anti-Phospho-PFKFB2-Ser483 antibody (420-500) (STJ90871)

STJ90871

GENERAL INFORMATION

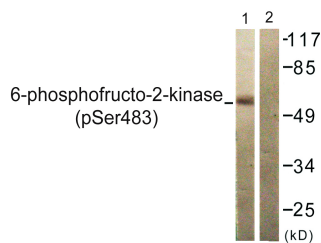
Product Type	Primary antibodies
Short Description	Rabbit polyclonal antibody anti-Phospho-6-Phosphofructo-2-Kinase/Fructose-2-6-Bisphosphatase 2-Ser483 (420-500) is suitable for use in Western Blot, Immunohistochemistry, Immunofluorescence and ELISA research applications.
Applications	WB, IHC-P, IF-P, ELISA
Host/Source	Rabbit
Reactivity	Human, Mouse, Rat

PRODUCT PROPERTIES

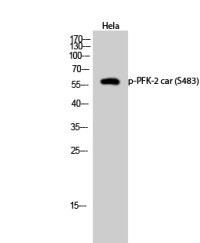
Clonality	Polyclonal
Clone ID	
Concentration	1 mg/mL
Conjugation	Unconjugated
Purification	The antibody was affinity-purified from rabbit anti-serum by affinity-chromatography.
Dilution Range	WB 1:500-1:2000 IHC 1:100-1:300 ELISA 1:40000
Formulation	PBS, 50% Glycerol, 0.5% BSA and 0.02% Sodium Azide.
Isotype	IgG
Storage Instruction	Store at -20°C for up to 1 year from the date of receipt, and avoid repeat freeze-thaw cycles.

TARGET INFORMATION

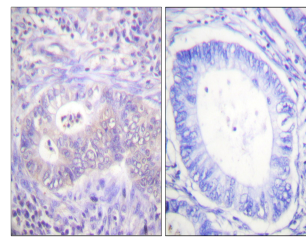
Gene ID	5208
Gene Symbol	PFKFB2
Uniprot ID	F262_HUMAN
Immunogen	The antiserum was produced against synthesized peptide derived from human PFKFB2 around the phosphorylation site of Ser483 at amino acid range 451-500
Immunogen Region	420-500
Specificity	Phospho-PFKFB2-Ser483 polyclonal antibody (6-Phosphofructo-2-Kinase/Fructose-2-6-Bisphosphatase 2) binds to endogenous 6-Phosphofructo-2-Kinase/Fructose-2-6-Bisphosphatase 2 at the amino acid region 420-500 only when phosphorylated at Ser483.
Immunogen Sequence	



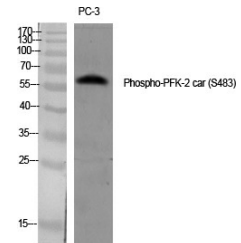
Western blot analysis of lysates from 293 cells treated with Heat shock, using PFKFB2 (Phospho-Ser483) Antibody. The lane on the right is blocked with the phospho peptide.



Western blot analysis of HeLa cells using Phospho-PFK-2 car (S483) Polyclonal Antibody diluted at 1: 1000



Immunohistochemistry analysis of paraffin-embedded human colon carcinoma, using PFKFB2 (Phospho-Ser483) Antibody. The picture on the right is blocked with the phospho peptide.



Western blot analysis of various cells using Phospho-PFK-2 car (S483) Polyclonal Antibody diluted at 1: 1000

This product is suitable for in-vitro studies under the RESEARCH USE ONLY [RUO] licence. This product must not be used as for diagnostic or other medical purposes.
St John's Laboratory Ltd, Knowledge Dock Business Centre, University Way, London, E16 2RD | Tel: 0208 223 3081