

Anti-Phospho-TP53BP1-Ser6 antibody (1-80) (STJ90870)

STJ90870

GENERAL INFORMATION

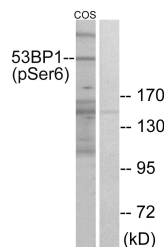
Product Type	Primary antibodies
Short Description	Rabbit polyclonal antibody anti-Phospho-Tp53-Binding Protein 1-Ser6 (1-80) is suitable for use in Western Blot, Immunohistochemistry, Immunofluorescence and ELISA research applications.
Applications	WB, IHC-P, IF-P, ELISA
Host/Source	Rabbit
Reactivity	Human, Mouse, Rat, Monkey

PRODUCT PROPERTIES

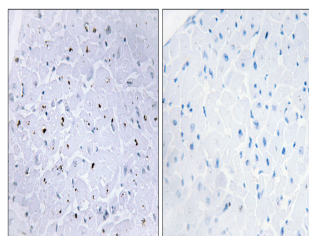
Clonality	Polyclonal
Clone ID	
Concentration	1 mg/mL
Conjugation	Unconjugated
Purification	The antibody was affinity-purified from rabbit anti-serum by affinity-chromatography.
Dilution Range	WB 1:500-1:2000 IHC 1:100-1:300 ELISA 1:5000
Formulation	PBS, 50% Glycerol, 0.5% BSA and 0.02% Sodium Azide.
Isotype	IgG
Storage Instruction	Store at -20°C for up to 1 year from the date of receipt, and avoid repeat freeze-thaw cycles.

TARGET INFORMATION

Gene ID	7158
Gene Symbol	TP53BP1
Uniprot ID	TP53B_HUMAN
Immunogen	The antiserum was produced against synthesized peptide derived from human 53BP1 around the phosphorylation site of Ser6 at amino acid range 1-50
Immunogen Region	1-80
Specificity	Phospho-TP53BP1-Ser6 polyclonal antibody (Tp53-Binding Protein 1) binds to endogenous Tp53-Binding Protein 1 at the amino acid region 1-80 only when phosphorylated at Ser6.
Immunogen Sequence	



Western blot analysis of lysates from COS7 cells treated with insulin 0.01U/ML 15' using 53BP1 (Phospho-Ser6) Antibody. The lane on the right is blocked with the phospho peptide.



Immunohistochemistry analysis of paraffin-embedded human heart, using 53BP1 (Phospho-Ser6) Antibody. The picture on the right is blocked with the phospho peptide.