

Anti-Phospho-PRKCQ-Thr538 antibody (480-560) (STJ90865)

STJ90865

GENERAL INFORMATION

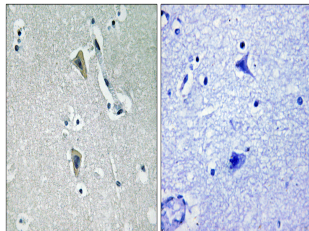
Product Type	Primary antibodies
Short Description	Rabbit polyclonal antibody anti-Phospho-Protein Kinase C Theta Type-Thr538 (480-560) is suitable for use in Western Blot, Immunohistochemistry, Immunofluorescence and ELISA research applications.
Applications	WB, IHC-P, IF-P, ELISA
Host/Source	Rabbit
Reactivity	Human, Mouse, Rat

PRODUCT PROPERTIES

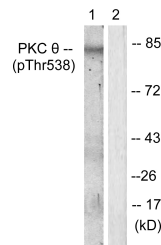
Clonality	Polyclonal
Clone ID	
Concentration	1 mg/mL
Conjugation	Unconjugated
Purification	The antibody was affinity-purified from rabbit anti-serum by affinity-chromatography.
Dilution Range	WB 1:500-1:2000 IHC 1:100-1:300 ELISA 1:5000
Formulation	PBS, 50% Glycerol, 0.5% BSA and 0.02% Sodium Azide.
Isotype	IgG
Storage Instruction	Store at -20°C for up to 1 year from the date of receipt, and avoid repeat freeze-thaw cycles.

TARGET INFORMATION

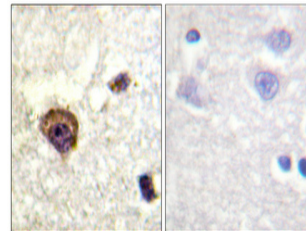
Gene ID	5588
Gene Symbol	PRKCQ
Uniprot ID	KPCT_HUMAN
Immunogen	The antiserum was produced against synthesized peptide derived from human PKC theta around the phosphorylation site of Thr538 at amino acid range 504-553
Immunogen Region	480-560
Specificity	Phospho-PRKCQ-Thr538 polyclonal antibody (Protein Kinase C Theta Type) binds to endogenous Protein Kinase C Theta Type at the amino acid region 480-560 only when phosphorylated at Thr538.
Immunogen Sequence	



Immunohistochemistry analysis of paraffin-embedded human brain, using PKC theta (Phospho-Thr538) Antibody. The picture on the right is blocked with the phospho peptide.



Western blot analysis of lysates from Jurkat cells, using PKC theta (Phospho-Thr538) Antibody. The lane on the right is blocked with the phospho peptide.



Immunohistochemical analysis of paraffin-embedded Human brain. Antibody was diluted at 1:100 (4°C overnight). High-pressure and temperature Tris-EDTA, pH8.0 was used for antigen retrieval. Negative control (right) obtained from antibody was pre-absorbed by immunogen peptide.