

Anti-Phospho-PEA15-Ser104 antibody (40-120) (STJ90861)

STJ90861

GENERAL INFORMATION

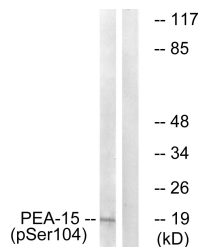
| | |
|--------------------------|---|
| Product Type | Primary antibodies |
| Short Description | Rabbit polyclonal antibody anti-Phospho-Astrocytic Phosphoprotein Pea-15-Ser104 (40-120) is suitable for use in Western Blot, Immunohistochemistry, Immunofluorescence and ELISA research applications. |
| Applications | WB, IHC-P, IF-P, ELISA |
| Host/Source | Rabbit |
| Reactivity | Human, Mouse, Rat, Monkey |

PRODUCT PROPERTIES

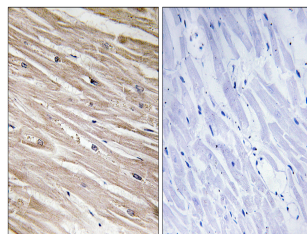
| | |
|----------------------------|--|
| Clonality | Polyclonal |
| Clone ID | |
| Concentration | 1 mg/mL |
| Conjugation | Unconjugated |
| Purification | The antibody was affinity-purified from rabbit anti-serum by affinity-chromatography. |
| Dilution Range | WB 1:500-1:2000 IHC 1:100-1:300 ELISA 1:20000 |
| Formulation | PBS, 50% Glycerol, 0.5% BSA and 0.02% Sodium Azide. |
| Isotype | IgG |
| Storage Instruction | Store at -20°C for up to 1 year from the date of receipt, and avoid repeat freeze-thaw cycles. |

TARGET INFORMATION

| | |
|---------------------------|--|
| Gene ID | 8682 |
| Gene Symbol | PEA15 |
| Uniprot ID | PEA15_HUMAN |
| Immunogen | The antiserum was produced against synthesized peptide derived from human PEA-15 around the phosphorylation site of Ser104 at amino acid range 70-119 |
| Immunogen Region | 40-120 |
| Specificity | Phospho-PEA15-Ser104 polyclonal antibody (Astrocytic Phosphoprotein Pea-15) binds to endogenous Astrocytic Phosphoprotein Pea-15 at the amino acid region 40-120 only when phosphorylated at Ser104. |
| Immunogen Sequence | |



Western blot analysis of lysates from COS7 cells treated with TNF 20ng/ml 5', using PEA-15 (Phospho-Ser104) Antibody. The lane on the right is blocked with the phospho peptide.



Immunohistochemistry analysis of paraffin-embedded human heart using PEA-15 (Phospho-Ser104) Antibody. The picture on the right is blocked with the phospho peptide.

This product is suitable for in-vitro studies under the RESEARCH USE ONLY [RUO] licence. This product must not be used as for diagnostic or other medical purposes.
St John's Laboratory Ltd, Knowledge Dock Business Centre, University Way, London, E16 2RD | Tel: 0208 223 3081