

## Anti-Phospho-GRIN1-Ser896 antibody (840-920) (STJ90856)

STJ90856

### GENERAL INFORMATION

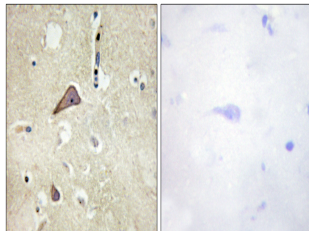
<b>Product Type</b>	Primary antibodies
<b>Short Description</b>	Rabbit polyclonal antibody anti-Phospho-Glutamate Receptor Ionotropic-Nmda 1-Ser896 (840-920) is suitable for use in Western Blot, Immunohistochemistry, Immunofluorescence and ELISA research applications.
<b>Applications</b>	WB, IHC-P, IF-P, ELISA
<b>Host/Source</b>	Rabbit
<b>Reactivity</b>	Human, Mouse, Rat

### PRODUCT PROPERTIES

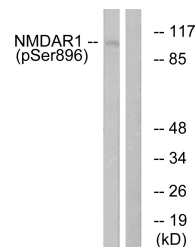
<b>Clonality</b>	Polyclonal
<b>Clone ID</b>	
<b>Concentration</b>	1 mg/mL
<b>Conjugation</b>	Unconjugated
<b>Purification</b>	The antibody was affinity-purified from rabbit anti-serum by affinity-chromatography.
<b>Dilution Range</b>	WB 1:500-1:2000 IHC 1:100-1:300 ELISA 1:40000
<b>Formulation</b>	PBS, 50% Glycerol, 0.5% BSA and 0.02% Sodium Azide.
<b>Isotype</b>	IgG
<b>Storage Instruction</b>	Store at -20°C for up to 1 year from the date of receipt, and avoid repeat freeze-thaw cycles.

### TARGET INFORMATION

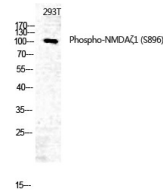
<b>Gene ID</b>	2902
<b>Gene Symbol</b>	GRIN1
<b>Uniprot ID</b>	NMDZ1_HUMAN
<b>Immunogen</b>	The antiserum was produced against synthesized peptide derived from human NMDAR1 around the phosphorylation site of Ser896 at amino acid range 862-911
<b>Immunogen Region</b>	840-920
<b>Specificity</b>	Phospho-GRIN1-Ser896 polyclonal antibody (Glutamate Receptor Ionotropic-Nmda 1) binds to endogenous Glutamate Receptor Ionotropic-Nmda 1 at the amino acid region 840-920 only when phosphorylated at Ser896.
<b>Immunogen Sequence</b>	



Immunohistochemistry analysis of paraffin-embedded human brain, using NMDAR1 (Phospho-Ser896) Antibody. The picture on the right is blocked with the phospho peptide.



Western blot analysis of lysates from K562 cells treated with PMA 125ng/ml 30', using NMDAR1 (Phospho-Ser896) Antibody. The lane on the right is blocked with the phospho peptide.



Western blot analysis of 293T using Phospho-NMDA Zeta 1 (S896) Polyclonal Antibody. Antibody was diluted at 1:500

This product is suitable for in-vitro studies under the RESEARCH USE ONLY [RUO] licence. This product must not be used as for diagnostic or other medical purposes.  
St John's Laboratory Ltd, Knowledge Dock Business Centre, University Way, London, E16 2RD | Tel: 0208 223 3081