

## Anti-Phospho-CSF1R-Tyr723 antibody (660-740) (STJ90853)

STJ90853

### GENERAL INFORMATION

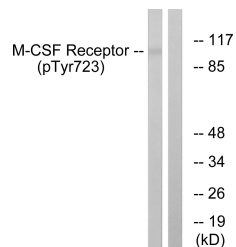
|                          |   |
|--------------------------|---|
| <b>Product Type</b>      | Primary antibodies  |
| <b>Short Description</b> | Rabbit polyclonal antibody anti-Phospho-Macrophage Colony-Stimulating Factor 1 Receptor-Tyr723 (660-740) is suitable for use in Western Blot, Immunohistochemistry, Immunofluorescence and ELISA research applications. |
| <b>Applications</b>      | WB, IHC-P, IF-P, ELISA  |
| <b>Host/Source</b>       | Rabbit  |
| <b>Reactivity</b>        | Human, Mouse, Rat   |

### PRODUCT PROPERTIES

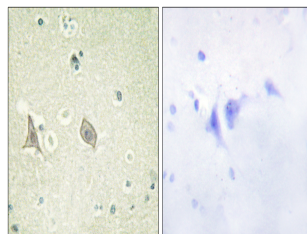
|                            |  |
|----------------------------|--|
| <b>Clonality</b>           | Polyclonal   |
| <b>Clone ID</b>            |  |
| <b>Concentration</b>       | 1 mg/mL  |
| <b>Conjugation</b>         | Unconjugated   |
| <b>Purification</b>        | The antibody was affinity-purified from rabbit anti-serum by affinity-chromatography.          |
| <b>Dilution Range</b>      | WB 1:500-1:2000<br>IHC 1:100-1:300<br>ELISA 1:5000   |
| <b>Formulation</b>         | PBS, 50% Glycerol, 0.5% BSA and 0.02% Sodium Azide.  |
| <b>Isotype</b>             | IgG  |
| <b>Storage Instruction</b> | Store at -20°C for up to 1 year from the date of receipt, and avoid repeat freeze-thaw cycles. |

### TARGET INFORMATION

|                           |   |
|---------------------------|---|
| <b>Gene ID</b>            | 1436  |
| <b>Gene Symbol</b>        | CSF1R   |
| <b>Uniprot ID</b>         | CSF1R_HUMAN   |
| <b>Immunogen</b>          | The antiserum was produced against synthesized peptide derived from human M-CSF Receptor around the phosphorylation site of Tyr723 at amino acid range 691-740  |
| <b>Immunogen Region</b>   | 660-740   |
| <b>Specificity</b>        | Phospho-CSF1R-Tyr723 polyclonal antibody (Macrophage Colony-Stimulating Factor 1 Receptor) binds to endogenous Macrophage Colony-Stimulating Factor 1 Receptor at the amino acid region 660-740 only when phosphorylated at Tyr723. |
| <b>Immunogen Sequence</b> |   |



Western blot analysis of lysates from HUVEC cells treated with PMA 125ng/ml 30', using M-CSF Receptor (Phospho-Tyr723) Antibody. The lane on the right is blocked with the phospho peptide.



Immunohistochemistry analysis of paraffin-embedded human brain, using M-CSF Receptor (Phospho-Tyr723) Antibody. The picture on the right is blocked with the phospho peptide.

This product is suitable for in-vitro studies under the RESEARCH USE ONLY [RUO] licence. This product must not be used as for diagnostic or other medical purposes.  
St John's Laboratory Ltd, Knowledge Dock Business Centre, University Way, London, E16 2RD | Tel: 0208 223 3081