

Anti-Phospho-AKT1-Tyr474 antibody (410-490) (STJ90843)

STJ90843

GENERAL INFORMATION

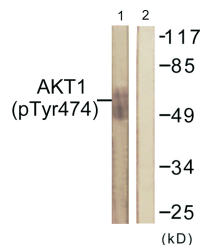
Product Type	Primary antibodies
Short Description	Rabbit polyclonal antibody anti-Phospho-Rac-Alpha Serine/Threonine-Protein Kinase-Tyr474 (410-490) is suitable for use in Western Blot, Immunohistochemistry, Immunofluorescence and ELISA research applications.
Applications	WB, IHC-P, IF-P, ELISA
Host/Source	Rabbit
Reactivity	Human, Mouse, Rat, Monkey

PRODUCT PROPERTIES

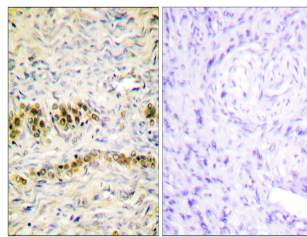
Clonality	Polyclonal
Clone ID	
Concentration	1 mg/mL
Conjugation	Unconjugated
Purification	The antibody was affinity-purified from rabbit anti-serum by affinity-chromatography.
Dilution Range	WB 1:500-1:2000 IHC 1:100-1:300 ELISA 1:5000
Formulation	PBS, 50% Glycerol, 0.5% BSA and 0.02% Sodium Azide.
Isotype	IgG
Storage Instruction	Store at -20°C for up to 1 year from the date of receipt, and avoid repeat freeze-thaw cycles.

TARGET INFORMATION

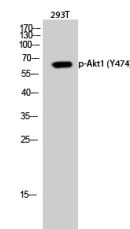
Gene ID	207
Gene Symbol	AKT1
Uniprot ID	AKT1_HUMAN
Immunogen	The antiserum was produced against synthesized peptide derived from human Akt around the phosphorylation site of Tyr474 at amino acid range 431-480
Immunogen Region	410-490
Specificity	Phospho-AKT1-Tyr474 polyclonal antibody (Rac-Alpha Serine/Threonine-Protein Kinase) binds to endogenous Rac-Alpha Serine/Threonine-Protein Kinase at the amino acid region 410-490 only when phosphorylated at Tyr474.
Immunogen Sequence	



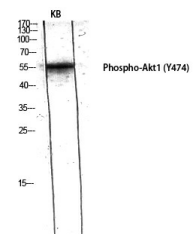
Western blot analysis of lysates from COS7 cells treated with UV 15', using Akt (Phospho-Tyr474) Antibody. The lane on the right is blocked with the phospho peptide.



Immunohistochemistry analysis of paraffin-embedded human ovary, using Akt (Phospho-Tyr474) Antibody. The picture on the right is blocked with the phospho peptide.



Western blot analysis of 293T cells using Phospho-Akt1 (Y474) Polyclonal Antibody diluted at 1:1000



Western blot analysis of KB using Phospho-Akt1 (Y474) Polyclonal Antibody diluted at 1:1000

This product is suitable for in-vitro studies under the RESEARCH USE ONLY [RUO] licence. This product must not be used as for diagnostic or other medical purposes.
St John's Laboratory Ltd, Knowledge Dock Business Centre, University Way, London, E16 2RD | Tel: 0208 223 3081