

Anti-Phospho-ZAP70-Tyr315 antibody (250-330) (STJ90842)

STJ90842

GENERAL INFORMATION

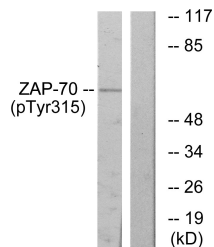
Product Type	Primary antibodies
Short Description	Rabbit polyclonal antibody anti-Phospho-Tyrosine-Protein Kinase Zap-70-Tyr315 (250-330) is suitable for use in Western Blot, Immunohistochemistry, Immunofluorescence and ELISA research applications.
Applications	WB, IHC-P, IF-P, ELISA
Host/Source	Rabbit
Reactivity	Human, Mouse

PRODUCT PROPERTIES

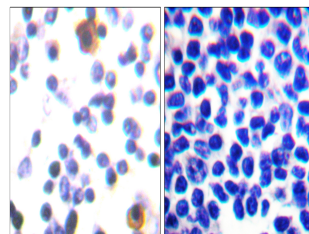
Clonality	Polyclonal
Clone ID	
Concentration	1 mg/mL
Conjugation	Unconjugated
Purification	The antibody was affinity-purified from rabbit anti-serum by affinity-chromatography.
Dilution Range	WB 1:500-1:2000 IHC 1:100-1:300 ELISA 1:10000
Formulation	PBS, 50% Glycerol, 0.5% BSA and 0.02% Sodium Azide.
Isotype	IgG
Storage Instruction	Store at 20°C for up to 1 year from the date of receipt, and avoid repeat freeze-thaw cycles.

TARGET INFORMATION

Gene ID	7535
Gene Symbol	ZAP70
Uniprot ID	ZAP70_HUMAN
Immunogen	The antiserum was produced against synthesized peptide derived from human ZAP-70 around the phosphorylation site of Tyr315 at amino acid range 281-330
Immunogen Region	250-330
Specificity	Phospho-ZAP70-Tyr315 polyclonal antibody (Tyrosine-Protein Kinase Zap-70) binds to endogenous Tyrosine-Protein Kinase Zap-70 at the amino acid region 250-330 only when phosphorylated at Tyr315.
Immunogen Sequence	



Western blot analysis of lysates from Jurkat cells treated with Ca²⁺ 40nM 30', using ZAP-70 (Phospho-Tyr315) Antibody. The lane on the right is blocked with the phospho peptide.



Immunohistochemistry analysis of paraffin-embedded human lymph node, using ZAP-70 (Phospho-Tyr315) Antibody. The picture on the right is blocked with the phospho peptide.

This product is suitable for in-vitro studies under the RESEARCH USE ONLY [RUO] licence. This product must not be used as for diagnostic or other medical purposes.
St John's Laboratory Ltd, Knowledge Dock Business Centre, University Way, London, E16 2RD | Tel: 0208 223 3081