

## Anti-Phospho-WAS-Tyr290 antibody (230-310) (STJ90839)

STJ90839

### GENERAL INFORMATION

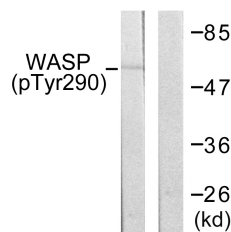
<b>Product Type</b>	Primary antibodies
<b>Short Description</b>	Rabbit polyclonal antibody anti-Phospho-Wiskott-Aldrich Syndrome Protein-Tyr290 (230-310) is suitable for use in Western Blot, Immunohistochemistry, Immunofluorescence and ELISA research applications.
<b>Applications</b>	WB, IHC-P, IF-P, ELISA
<b>Host/Source</b>	Rabbit
<b>Reactivity</b>	Human, Mouse

### PRODUCT PROPERTIES

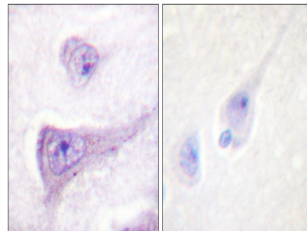
<b>Clonality</b>	Polyclonal
<b>Clone ID</b>	
<b>Concentration</b>	1 mg/mL
<b>Conjugation</b>	Unconjugated
<b>Purification</b>	The antibody was affinity-purified from rabbit anti-serum by affinity-chromatography.
<b>Dilution Range</b>	WB 1:500-1:2000 IHC 1:100-1:300 ELISA 1:5000
<b>Formulation</b>	PBS, 50% Glycerol, 0.5% BSA and 0.02% Sodium Azide.
<b>Isotype</b>	IgG
<b>Storage Instruction</b>	Store at -20°C for up to 1 year from the date of receipt, and avoid repeat freeze-thaw cycles.

### TARGET INFORMATION

<b>Gene ID</b>	7454
<b>Gene Symbol</b>	WAS
<b>Uniprot ID</b>	WASP_HUMAN
<b>Immunogen</b>	The antiserum was produced against synthesized peptide derived from human WASP around the phosphorylation site of Tyr290 at amino acid range 256-305
<b>Immunogen Region</b>	230-310
<b>Specificity</b>	Phospho-WAS-Tyr290 polyclonal antibody (Wiskott-Aldrich Syndrome Protein) binds to endogenous Wiskott-Aldrich Syndrome Protein at the amino acid region 230-310 only when phosphorylated at Tyr290.
<b>Immunogen Sequence</b>	



Western blot analysis of lysates from HepG2 cells, using WASP (Phospho-Tyr290) Antibody. The lane on the right is blocked with the phospho peptide.



Immunohistochemistry analysis of paraffin-embedded human brain, using WASP (Phospho-Tyr290) Antibody. The picture on the right is blocked with the phospho peptide.

This product is suitable for in-vitro studies under the RESEARCH USE ONLY [RUO] licence. This product must not be used as for diagnostic or other medical purposes.  
St John's Laboratory Ltd, Knowledge Dock Business Centre, University Way, London, E16 2RD | Tel: 0208 223 3081