

Anti-Phospho-SYN1-Ser62 antibody (40-120) (STJ90832)

STJ90832

GENERAL INFORMATION

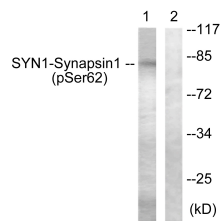
Product Type	Primary antibodies
Short Description	Rabbit polyclonal antibody anti-Phospho-Synapsin-1-Ser62 (40-120) is suitable for use in Western Blot, Immunohistochemistry, Immunofluorescence and ELISA research applications.
Applications	WB, IHC-P, IF-P, ELISA
Host/Source	Rabbit
Reactivity	Human, Mouse, Rat

PRODUCT PROPERTIES

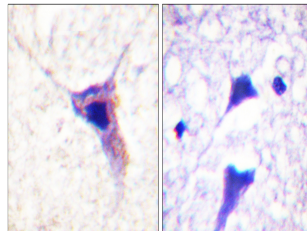
Clonality	Polyclonal
Clone ID	
Concentration	1 mg/mL
Conjugation	Unconjugated
Purification	The antibody was affinity-purified from rabbit anti-serum by affinity-chromatography.
Dilution Range	WB 1:500-1:2000 IHC 1:100-1:300 ELISA 1:10000
Formulation	PBS, 50% Glycerol, 0.5% BSA and 0.02% Sodium Azide.
Isotype	IgG
Storage Instruction	Store at -20°C for up to 1 year from the date of receipt, and avoid repeat freeze-thaw cycles.

TARGET INFORMATION

Gene ID	6853
Gene Symbol	SYN1
Uniprot ID	SYN1_HUMAN
Immunogen	The antiserum was produced against synthesized peptide derived from human Synapsin1 around the phosphorylation site of Ser62 at amino acid range 26-75
Immunogen Region	40-120
Specificity	Phospho-SYN1-Ser62 polyclonal antibody (Synapsin-1) binds to endogenous Synapsin-1 at the amino acid region 40-120 only when phosphorylated at Ser62.
Immunogen Sequence	



Western blot analysis of lysates from HeLa cells treated with Anisomycin 25ug/ml 30', using Synapsin1 (Phospho-Ser62) Antibody. The lane on the right is blocked with the phospho peptide.



Immunohistochemistry analysis of paraffin-embedded human brain, using Synapsin1 (Phospho-Ser62) Antibody. The picture on the right is blocked with the phospho peptide.

This product is suitable for in-vitro studies under the RESEARCH USE ONLY [RUO] licence. This product must not be used as for diagnostic or other medical purposes.
St John's Laboratory Ltd, Knowledge Dock Business Centre, University Way, London, E16 2RD | Tel: 0208 223 3081