

Anti-Phospho-PAK Alpha/Beta/Gamma-Ser144/141/139 antibody (80-160) (STJ90827)

STJ90827

GENERAL INFORMATION

Product Type	Primary antibodies
Short Description	Rabbit polyclonal antibody anti-Phospho-Serine/threonine-protein kinase PAK 1 and Serine/threonine-protein kinase PAK 2 and Serine/threonine-protein kinase PAK 3-Ser144/141/139 (80-160) is suitable for use in Western Blot, Immunohistochemistry, Immun
Applications	WB, IHC-P, IF-P, ELISA
Host/Source	Rabbit
Reactivity	Human, Mouse, Rat

PRODUCT PROPERTIES

Clonality	Polyclonal
Clone ID	
Concentration	1 mg/mL
Conjugation	Unconjugated
Purification	The antibody was affinity-purified from rabbit anti-serum by affinity-chromatography.
Dilution Range	WB 1:500-1:2000 IHC 1:100-1:300 ELISA 1:10000
Formulation	PBS, 50% Glycerol, 0.5% BSA and 0.02% Sodium Azide.
Isotype	IgG
Storage Instruction	Store at -20°C for up to 1 year from the date of receipt, and avoid repeat freeze-thaw cycles.

TARGET INFORMATION

Gene ID [5058](#)
[5063](#)
[5062](#)
[PAK1](#)
[PAK3](#)
[PAK1_HUMAN](#)
[PAK3_HUMAN](#)
[PAK2_HUMAN](#)

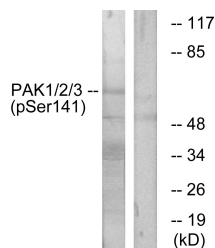
<

Immunogen The antiserum was produced against synthesized peptide derived from human PAK1/2/3 around the phosphorylation site of Ser144/141/139 at amino acid range 111-160

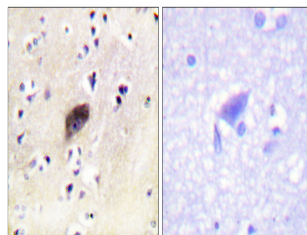
Immunogen Region 80-160

Specificity Phospho-PAK Alpha/Beta/Gamma-Ser144/141/139 polyclonal antibody (Serine/threonine-protein kinase PAK 1 and Serine/threonine-protein kinase PAK 2 and Serine/threonine-protein kinase PAK 3) binds to endogenous Serine/threonine-protein kinase PAK 1 and

Immunogen Sequence



Western blot analysis of lysates from mouse brain, using PAK1/2/3 (Phospho-Ser144/141/139) Antibody. The lane on the right is blocked with the phospho peptide.



Immunohistochemistry analysis of paraffin-embedded human brain, using PAK1/2/3 (Phospho-Ser144/141/139) Antibody. The picture on the right is blocked with the phospho peptide.