

## Anti-Phospho-PPP1R12A-Thr853 antibody (590-670) (STJ90822)

STJ90822

### GENERAL INFORMATION

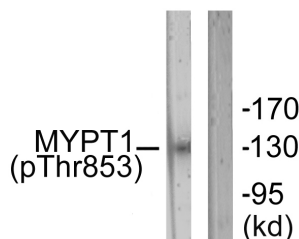
<b>Product Type</b>	Primary antibodies
<b>Short Description</b>	Rabbit polyclonal antibody anti-Phospho-Protein Phosphatase 1 Regulatory Subunit 12a-Thr853 (590-670) is suitable for use in Immunofluorescence, Immunocytochemistry, Western Blot, Immunohistochemistry and ELISA research applications.
<b>Applications</b>	IF, ICC, WB, IHC-P, ELISA
<b>Host/Source</b>	Rabbit
<b>Reactivity</b>	Human, Mouse, Rat

### PRODUCT PROPERTIES

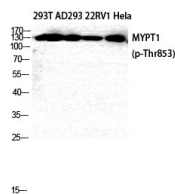
<b>Clonality</b>	Polyclonal
<b>Clone ID</b>	
<b>Concentration</b>	1 mg/mL
<b>Conjugation</b>	Unconjugated
<b>Purification</b>	The antibody was affinity-purified from rabbit anti-serum by affinity-chromatography.
<b>Dilution</b>	IF 1:50-200
<b>Range</b>	WB 1:500-1:2000 IHC 1:100-1:300 ELISA 1:5000
<b>Formulation</b>	PBS, 50% Glycerol, 0.5% BSA and 0.02% Sodium Azide.
<b>Isotype</b>	IgG
<b>Storage Instruction</b>	Store at -20°C for up to 1 year from the date of receipt, and avoid repeat freeze-thaw cycles.

### TARGET INFORMATION

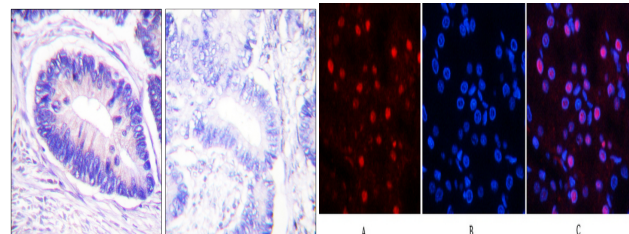
<b>Gene ID</b>	4659
<b>Gene Symbol</b>	PPP1R12A
<b>Uniprot ID</b>	MYPT1_HUMAN
<b>Immunogen</b>	The antiserum was produced against synthesized peptide derived from human MYPT1 around the phosphorylation site of Thr853 at amino acid range 621-670
<b>Immunogen Region</b>	590-670
<b>Specificity</b>	Phospho-PPP1R12A-Thr853 polyclonal antibody (Protein Phosphatase 1 Regulatory Subunit 12a) binds to endogenous Protein Phosphatase 1 Regulatory Subunit 12a at the amino acid region 590-670 only when phosphorylated at Thr853.
<b>Immunogen Sequence</b>	



Western blot analysis of lysates from NIH/3T3 cells, using MYPT1 (Phospho-Thr853) Antibody. The lane on the right is blocked with the phospho peptide.



Western blot analysis of 293T AD293 22RV1 HELA cells using Phospho-MYPT1 (T853) Polyclonal Antibody diluted at 1: 2000



Immunofluorescence analysis of rat-kidney tissue. 1, MYPT1 (phospho Thr853) Polyclonal Antibody (red) was diluted at 1:200 (4°C, overnight). 2, Cy3 labeled Secondary antibody was diluted at 1:300 (room temperature, 50min). 3, Picture B: DAPI (blue) 10min. Picture A: Target. Picture B: DAPI. Picture C: merge of A+B

This product is suitable for in-vitro studies under the RESEARCH USE ONLY [RUO] licence. This product must not be used as for diagnostic or other medical purposes.  
St John's Laboratory Ltd, Knowledge Dock Business Centre, University Way, London, E16 2RD | Tel: 0208 223 3081