

## Anti-Phospho-LCK-Tyr505 antibody (430-510) (STJ90820)

STJ90820

### GENERAL INFORMATION

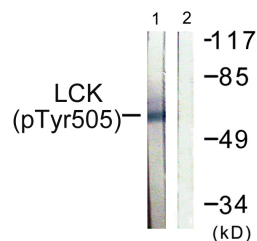
|                          |                                                                                                                                                                                                     |
|--------------------------|-----------------------------------------------------------------------------------------------------------------------------------------------------------------------------------------------------|
| <b>Product Type</b>      | Primary antibodies                                                                                                                                                                                  |
| <b>Short Description</b> | Rabbit polyclonal antibody anti-Phospho-Tyrosine-Protein Kinase Lck-Tyr505 (430-510) is suitable for use in Western Blot, Immunohistochemistry, Immunofluorescence and ELISA research applications. |
| <b>Applications</b>      | WB, IHC-P, IF-P, ELISA                                                                                                                                                                              |
| <b>Host/Source</b>       | Rabbit                                                                                                                                                                                              |
| <b>Reactivity</b>        | Human, Mouse, Rat                                                                                                                                                                                   |

### PRODUCT PROPERTIES

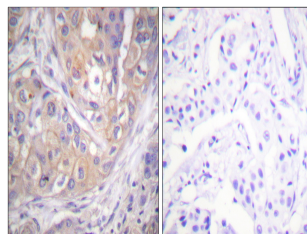
|                            |                                                                                                |
|----------------------------|------------------------------------------------------------------------------------------------|
| <b>Clonality</b>           | Polyclonal                                                                                     |
| <b>Clone ID</b>            |                                                                                                |
| <b>Concentration</b>       | 1 mg/mL                                                                                        |
| <b>Conjugation</b>         | Unconjugated                                                                                   |
| <b>Purification</b>        | The antibody was affinity-purified from rabbit anti-serum by affinity-chromatography.          |
| <b>Dilution Range</b>      | WB 1:500-1:2000<br>IHC 1:100-1:300<br>ELISA 1:40000                                            |
| <b>Formulation</b>         | PBS, 50% Glycerol, 0.5% BSA and 0.02% Sodium Azide.                                            |
| <b>Isotype</b>             | IgG                                                                                            |
| <b>Storage Instruction</b> | Store at -20°C for up to 1 year from the date of receipt, and avoid repeat freeze-thaw cycles. |

### TARGET INFORMATION

|                           |                                                                                                                                                                                           |
|---------------------------|-------------------------------------------------------------------------------------------------------------------------------------------------------------------------------------------|
| <b>Gene ID</b>            | 3932                                                                                                                                                                                      |
| <b>Gene Symbol</b>        | LCK                                                                                                                                                                                       |
| <b>Uniprot ID</b>         | LCK_HUMAN                                                                                                                                                                                 |
| <b>Immunogen</b>          | The antiserum was produced against synthesized peptide derived from human Lck around the phosphorylation site of Tyr505 at amino acid range 460-509                                       |
| <b>Immunogen Region</b>   | 430-510                                                                                                                                                                                   |
| <b>Specificity</b>        | Phospho-LCK-Tyr505 polyclonal antibody (Tyrosine-Protein Kinase Lck) binds to endogenous Tyrosine-Protein Kinase Lck at the amino acid region 430-510 only when phosphorylated at Tyr505. |
| <b>Immunogen Sequence</b> |                                                                                                                                                                                           |



Western blot analysis of lysates from Jurkat cells, using Lck (Phospho-Tyr505) Antibody. The lane on the right is blocked with the phospho peptide.



Immunohistochemistry analysis of paraffin-embedded human breast carcinoma, using Lck (Phospho-Tyr505) Antibody. The picture on the right is blocked with the phospho peptide.

This product is suitable for in-vitro studies under the RESEARCH USE ONLY [RUO] licence. This product must not be used as for diagnostic or other medical purposes.  
St John's Laboratory Ltd, Knowledge Dock Business Centre, University Way, London, E16 2RD | Tel: 0208 223 3081