

## Anti-Phospho-INSR-Tyr1361 antibody (1300-1380) (STJ90816)

STJ90816

### GENERAL INFORMATION

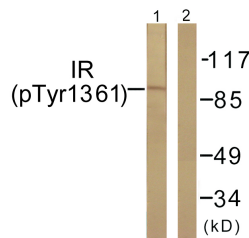
<b>Product Type</b>	Primary antibodies
<b>Short Description</b>	Rabbit polyclonal antibody anti-Phospho-Insulin Receptor-Tyr1361 (1300-1380) is suitable for use in Western Blot, Immunohistochemistry, Immunofluorescence and ELISA research applications.
<b>Applications</b>	WB, IHC-P, IF-P, ELISA
<b>Host/Source</b>	Rabbit
<b>Reactivity</b>	Human, Mouse, Rat

### PRODUCT PROPERTIES

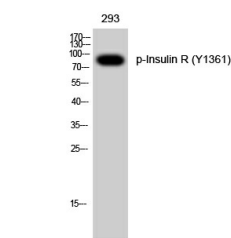
<b>Clonality</b>	Polyclonal
<b>Clone ID</b>	
<b>Concentration</b>	1 mg/mL
<b>Conjugation</b>	Unconjugated
<b>Purification</b>	The antibody was affinity-purified from rabbit anti-serum by affinity-chromatography.
<b>Dilution Range</b>	WB 1:500-1:2000 IHC 1:100-1:300 ELISA 1:10000
<b>Formulation</b>	PBS, 50% Glycerol, 0.5% BSA and 0.02% Sodium Azide.
<b>Isotype</b>	IgG
<b>Storage Instruction</b>	Store at -20°C for up to 1 year from the date of receipt, and avoid repeat freeze-thaw cycles.

### TARGET INFORMATION

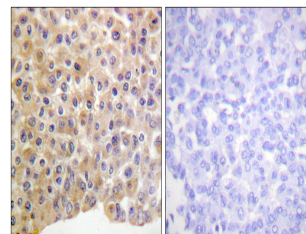
<b>Gene ID</b>	3643
<b>Gene Symbol</b>	INSR
<b>Uniprot ID</b>	INSR_HUMAN
<b>Immunogen</b>	The antiserum was produced against synthesized peptide derived from human IR around the phosphorylation site of Tyr1361 at amino acid range 1331-1380
<b>Immunogen Region</b>	1300-1380
<b>Specificity</b>	Phospho-INSR-Tyr1361 polyclonal antibody (Insulin Receptor) binds to endogenous Insulin Receptor at the amino acid region 1300-1380 only when phosphorylated at Tyr1361.
<b>Immunogen Sequence</b>	



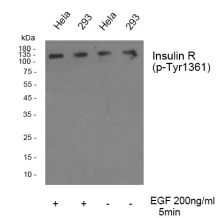
Western blot analysis of lysates from 293 cells treated with Heat shock, using IR (Phospho-Tyr1361) Antibody. The lane on the right is blocked with the phospho peptide.



Western blot analysis of 293 cells using Phospho-Insulin R (Y1361) Polyclonal Antibody.



Immunohistochemistry analysis of paraffin-embedded human breast carcinoma, using IR (Phospho-Tyr1361) Antibody. The picture on the right is blocked with the phospho peptide.



Western blot analysis of Insulin R (phospho Tyr1361) Polyclonal Antibody, using hela, 293 cell treated or untreated with EGF 200ng/ml 30', 4°C over night, secondary antibody (cat: NA was diluted at 1:10000, 37°C 1hour).

This product is suitable for in-vitro studies under the RESEARCH USE ONLY [RUO] licence. This product must not be used as for diagnostic or other medical purposes.  
St John's Laboratory Ltd, Knowledge Dock Business Centre, University Way, London, E16 2RD | Tel: 0208 223 3081