

Anti-Phospho-IKBKB-Tyr199 antibody (140-220) (STJ90814)

STJ90814

GENERAL INFORMATION

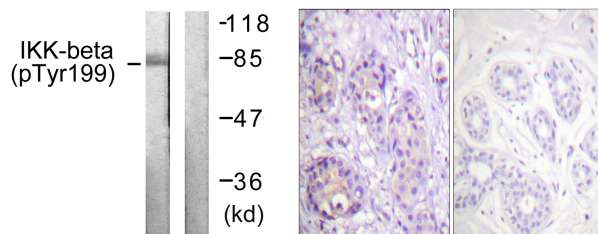
Product Type	Primary antibodies
Short Description	Rabbit polyclonal antibody anti-Phospho-Inhibitor Of Nuclear Factor Kappa-B Kinase Subunit Beta-Tyr199 (140-220) is suitable for use in Western Blot, Immunohistochemistry, Immunofluorescence and ELISA research applications.
Applications	WB, IHC-P, IF-P, ELISA
Host/Source	Rabbit
Reactivity	Human, Mouse, Rat

PRODUCT PROPERTIES

Clonality	Polyclonal
Clone ID	
Concentration	1 mg/mL
Conjugation	Unconjugated
Purification	The antibody was affinity-purified from rabbit anti-serum by affinity-chromatography.
Dilution	WB 1:500-1:2000
Range	IHC 1:100-1:300 ELISA 1:5000
Formulation	PBS, 50% Glycerol, 0.5% BSA and 0.02% Sodium Azide.
Isotype	IgG
Storage Instruction	Store at -20°C for up to 1 year from the date of receipt, and avoid repeat freeze-thaw cycles.

TARGET INFORMATION

Gene ID	3551
Gene Symbol	IKKBK
Uniprot ID	IKKB_HUMAN
Immunogen	The antiserum was produced against synthesized peptide derived from human IKK-beta around the phosphorylation site of Tyr199 at amino acid range 166-215
Immunogen Region	140-220
Specificity	Phospho-IKBKB-Tyr199 polyclonal antibody (Inhibitor Of Nuclear Factor Kappa-B Kinase Subunit Beta) binds to endogenous Inhibitor Of Nuclear Factor Kappa-B Kinase Subunit Beta at the amino acid region 140-220 only when phosphorylated at Tyr199.
Immunogen Sequence	



Western blot analysis of lysates from HeLa cells treated with TNF-α 20ng/ml + Calyculin A 50nM 5', using IKK-beta (Phospho-Tyr199) Antibody. The lane on the right is blocked with the phospho peptide.

Immunohistochemistry analysis of paraffin-embedded human breast carcinoma, using IKK-beta (Phospho-Tyr199) Antibody. The picture on the right is blocked with the phospho peptide.

This product is suitable for in-vitro studies under the RESEARCH USE ONLY [RUO] licence. This product must not be used as for diagnostic or other medical purposes.
St John's Laboratory Ltd, Knowledge Dock Business Centre, University Way, London, E16 2RD | Tel: 0208 223 3081