

Anti-Phospho-FoxO1/3/4-Thr24/32 antibody (10-90) (STJ90811)

STJ90811

GENERAL INFORMATION

Product Type	Primary antibodies
Short Description	Rabbit polyclonal antibody anti-Phospho-Forkhead box protein O1 and Forkhead box protein O3 and Forkhead box protein O4-Thr24/32 (10-90) is suitable for use in Western Blot, Immunohistochemistry, Immunofluorescence and ELISA research applications.
Applications	WB, IHC-P, IF-P, ELISA
Host/Source	Rabbit
Reactivity	Human, Mouse, Rat

PRODUCT PROPERTIES

Clonality	Polyclonal
Clone ID	
Concentration	1 mg/mL
Conjugation	Unconjugated
Purification	The antibody was affinity-purified from rabbit anti-serum by affinity-chromatography.
Dilution Range	WB 1:500-1:2000 IHC 1:100-1:300 ELISA 1:5000
Formulation	PBS, 50% Glycerol, 0.5% BSA and 0.02% Sodium Azide.
Isotype	IgG
Storage Instruction	Store at -20°C for up to 1 year from the date of receipt, and avoid repeat freeze-thaw cycles.

TARGET INFORMATION

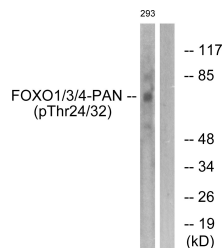
Gene ID [2308](#)
[2309](#)
[4303](#)
[FOXO1](#)
[FOXO3](#)
[FOXO1_HUMAN](#)
[FOXO3_HUMAN](#)
[FOXO4_HUMAN](#)

Immunogen The antiserum was produced against synthesized peptide derived from human FOXO1/3/4-pan around the phosphorylation site of Thr24/32 at amino acid range 15-64

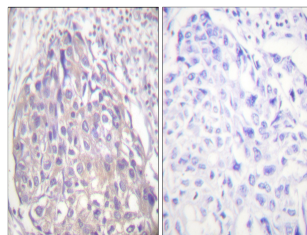
Immunogen Region 10-90

Specificity Phospho-FoxO1/3/4-Thr24/32 polyclonal antibody (Forkhead box protein O1 and Forkhead box protein O3 and Forkhead box protein O4) binds to endogenous Forkhead box protein O1 and Forkhead box protein O3 and Forkhead box protein O4 at the amino acid reg

Immunogen Sequence



Western blot analysis of lysates from 293 cells treated with Serum 20% 15', using FOXO1/3/4-pan (Phospho-Thr24/32) Antibody. The lane on the right is blocked with the phospho peptide.



Immunohistochemistry analysis of paraffin-embedded human breast carcinoma, using FOXO1/3/4-pan (Phospho-Thr24/32) Antibody. The picture on the right is blocked with the phospho peptide.