

Anti-Phospho-CBL-Tyr674 antibody (610-690) (STJ90807)

STJ90807

GENERAL INFORMATION

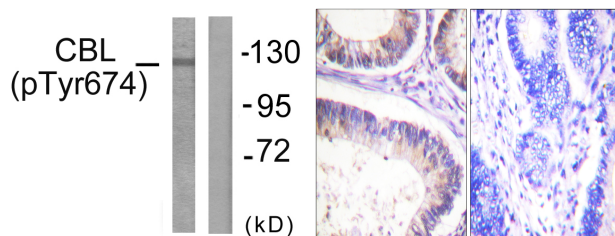
Product Type	Primary antibodies
Short Description	Rabbit polyclonal antibody anti-Phospho-E3 Ubiquitin-Protein Ligase Cbl-Tyr674 (610-690) is suitable for use in Western Blot, Immunohistochemistry, Immunofluorescence and ELISA research applications.
Applications	WB, IHC-P, IF-P, ELISA
Host/Source	Rabbit
Reactivity	Human, Mouse, Rat

PRODUCT PROPERTIES

Clonality	Polyclonal
Clone ID	
Concentration	1 mg/mL
Conjugation	Unconjugated
Purification	The antibody was affinity-purified from rabbit anti-serum by affinity-chromatography.
Dilution Range	WB 1:500-1:2000 IHC 1:100-1:300 ELISA 1:5000
Formulation	PBS, 50% Glycerol, 0.5% BSA and 0.02% Sodium Azide.
Isotype	IgG
Storage Instruction	Store at -20°C for up to 1 year from the date of receipt, and avoid repeat freeze-thaw cycles.

TARGET INFORMATION

Gene ID	867
Gene Symbol	CBL
Uniprot ID	CBL_HUMAN
Immunogen	The antiserum was produced against synthesized peptide derived from human CBL around the phosphorylation site of Tyr674 at amino acid range 640-689
Immunogen Region	610-690
Specificity	Phospho-CBL-Tyr674 polyclonal antibody (E3 Ubiquitin-Protein Ligase Cbl) binds to endogenous E3 Ubiquitin-Protein Ligase Cbl at the amino acid region 610-690 only when phosphorylated at Tyr674.
Immunogen Sequence	



This product is suitable for in-vitro studies under the RESEARCH USE ONLY [RUO] licence. This product must not be used as for diagnostic or other medical purposes.
St John's Laboratory Ltd, Knowledge Dock Business Centre, University Way, London, E16 2RD | Tel: 0208 223 3081