

Anti-Phospho-AURKA-Thr288 antibody (230-310) (STJ90805)

STJ90805

GENERAL INFORMATION

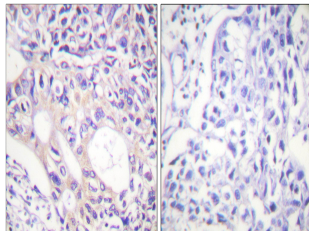
Product Type	Primary antibodies
Short Description	Rabbit polyclonal antibody anti-Phospho-Aurora Kinase A-Thr288 (230-310) is suitable for use in Western Blot, Immunohistochemistry, Immunofluorescence and ELISA research applications.
Applications	WB, IHC-P, IF-P, ELISA
Host/Source	Rabbit
Reactivity	Human, Mouse, Rat

PRODUCT PROPERTIES

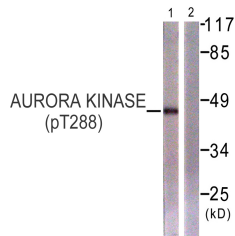
Clonality	Polyclonal
Clone ID	
Concentration	1 mg/mL
Conjugation	Unconjugated
Purification	The antibody was affinity-purified from rabbit anti-serum by affinity-chromatography.
Dilution Range	WB 1:500-1:2000 IHC 1:100-1:300 ELISA 1:5000
Formulation	PBS, 50% Glycerol, 0.5% BSA and 0.02% Sodium Azide.
Isotype	IgG
Storage Instruction	Store at -20°C for up to 1 year from the date of receipt, and avoid repeat freeze-thaw cycles.

TARGET INFORMATION

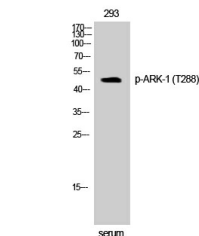
Gene ID	6790
Gene Symbol	AURKA
Uniprot ID	AURKA_HUMAN
Immunogen	The antiserum was produced against synthesized peptide derived from human Aurora Kinase around the phosphorylation site of Thr288 at amino acid range 256-305
Immunogen Region	230-310
Specificity	Phospho-AURKA-Thr288 polyclonal antibody (Aurora Kinase A) binds to endogenous Aurora Kinase A at the amino acid region 230-310 only when phosphorylated at Thr288.
Immunogen Sequence	



Immunohistochemistry analysis of paraffin-embedded human breast carcinoma, using Aurora Kinase (Phospho-Thr288) Antibody. The picture on the right is blocked with the phospho peptide.



Western blot analysis of lysates from 293 cells treated with serum 20% 15', using Aurora Kinase (Phospho-Thr288) Antibody. The lane on the right is blocked with the phospho peptide.



Western blot analysis of 293 cells using Phospho-ARK-1 (T288) Polyclonal Antibody

This product is suitable for in-vitro studies under the RESEARCH USE ONLY [RUO] licence. This product must not be used as for diagnostic or other medical purposes.
St John's Laboratory Ltd, Knowledge Dock Business Centre, University Way, London, E16 2RD | Tel: 0208 223 3081