

Anti-Phospho-DCLRE1C-Ser516 antibody (460-540) (STJ90803)

STJ90803

GENERAL INFORMATION

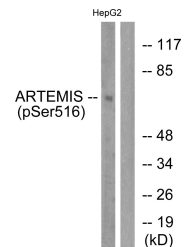
Product Type	Primary antibodies
Short Description	Rabbit polyclonal antibody anti-Phospho-Protein Artemis-Ser516 (460-540) is suitable for use in Western Blot, Immunohistochemistry, Immunofluorescence and ELISA research applications.
Applications	WB, IHC-P, IF-P, ELISA
Host/Source	Rabbit
Reactivity	Human, Mouse

PRODUCT PROPERTIES

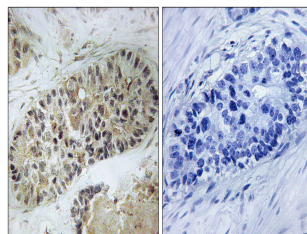
Clonality	Polyclonal
Clone ID	
Concentration	1 mg/mL
Conjugation	Unconjugated
Purification	The antibody was affinity-purified from rabbit anti-serum by affinity-chromatography.
Dilution Range	WB 1:500-1:2000 IHC 1:100-1:300 ELISA 1:5000
Formulation	PBS, 50% Glycerol, 0.5% BSA and 0.02% Sodium Azide.
Isotype	IgG
Storage Instruction	Store at -20°C for up to 1 year from the date of receipt, and avoid repeat freeze-thaw cycles.

TARGET INFORMATION

Gene ID	64421
Gene Symbol	DCLRE1C
Uniprot ID	DCR1C_HUMAN
Immunogen	The antiserum was produced against synthesized peptide derived from human Artemis around the phosphorylation site of Ser516 at amino acid range 482-531
Immunogen Region	460-540
Specificity	Phospho-DCLRE1C-Ser516 polyclonal antibody (Protein Artemis) binds to endogenous Protein Artemis at the amino acid region 460-540 only when phosphorylated at Ser516.
Immunogen Sequence	



Western blot analysis of lysates from HepG2 cells treated with EGF 200ng/ml 30', using Artemis (Phospho-Ser516) Antibody. The lane on the right is blocked with the phospho peptide.



Immunohistochemistry analysis of paraffin-embedded human lung carcinoma, using Artemis (Phospho-Ser516) Antibody. The picture on the right is blocked with the phospho peptide.