

Anti-Phospho-IRS1-Ser616 antibody (550-630) (STJ90800)

STJ90800

GENERAL INFORMATION

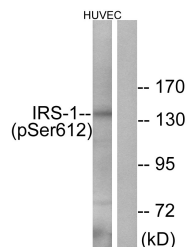
Product Type	Primary antibodies
Short Description	Rabbit polyclonal antibody anti-Phospho-Insulin Receptor Substrate 1-Ser616 (550-630) is suitable for use in Western Blot, Immunohistochemistry, Immunofluorescence and ELISA research applications.
Applications	WB, IHC-P, IF-P, ELISA
Host/Source	Rabbit
Reactivity	Human, Mouse, Rat

PRODUCT PROPERTIES

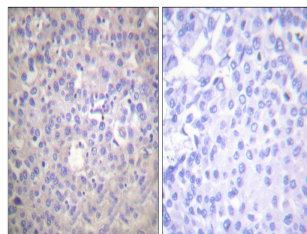
Clonality	Polyclonal
Clone ID	
Concentration	1 mg/mL
Conjugation	Unconjugated
Purification	The antibody was affinity-purified from rabbit anti-serum by affinity-chromatography.
Dilution Range	WB 1:500-1:2000 IHC 1:100-1:300 ELISA 1:5000
Formulation	PBS, 50% Glycerol, 0.5% BSA and 0.02% Sodium Azide.
Isotype	IgG
Storage Instruction	Store at 20°C for up to 1 year from the date of receipt, and avoid repeat freeze-thaw cycles.

TARGET INFORMATION

Gene ID	3667
Gene Symbol	IRS1
Uniprot ID	IRS1_HUMAN
Immunogen	The antiserum was produced against synthesized peptide derived from human IRS-1 around the phosphorylation site of Ser612 at amino acid range 578-627
Immunogen Region	550-630
Specificity	Phospho-IRS1-Ser616 polyclonal antibody (Insulin Receptor Substrate 1) binds to endogenous Insulin Receptor Substrate 1 at the amino acid region 550-630 only when phosphorylated at Ser616.
Immunogen Sequence	



Western blot analysis of lysates from HUVEC cells treated with insulin 0.01U/ml 30', using IRS-1 (Phospho-Ser612) Antibody. The lane on the right is blocked with the phospho peptide.



Immunohistochemistry analysis of paraffin-embedded human breast carcinoma, using IRS-1 (Phospho-Ser612) Antibody. The picture on the right is blocked with the phospho peptide.

This product is suitable for in-vitro studies under the RESEARCH USE ONLY [RUO] licence. This product must not be used as for diagnostic or other medical purposes.
St John's Laboratory Ltd, Knowledge Dock Business Centre, University Way, London, E16 2RD | Tel: 0208 223 3081