

Anti-Phospho-IKBKG-Ser31 antibody (10-90) (STJ90798)

STJ90798

GENERAL INFORMATION

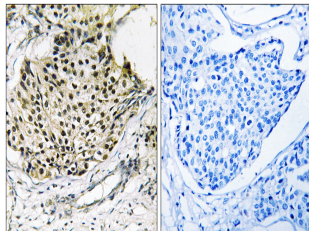
Product Type	Primary antibodies
Short Description	Rabbit polyclonal antibody anti-Phospho-Nf-Kappa-B Essential Modulator-Ser31 (10-90) is suitable for use in Western Blot, Immunohistochemistry, Immunofluorescence and ELISA research applications.
Applications	WB, IHC-P, IF-P, ELISA
Host/Source	Rabbit
Reactivity	Human, Rat, Mouse

PRODUCT PROPERTIES

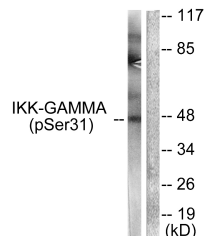
Clonality	Polyclonal
Clone ID	
Concentration	1 mg/mL
Conjugation	Unconjugated
Purification	The antibody was affinity-purified from rabbit anti-serum by affinity-chromatography.
Dilution Range	WB 1:500-1:2000 IHC 1:100-1:300 ELISA 1:10000
Formulation	PBS, 50% Glycerol, 0.5% BSA and 0.02% Sodium Azide.
Isotype	IgG
Storage Instruction	Store at -20°C for up to 1 year from the date of receipt, and avoid repeat freeze-thaw cycles.

TARGET INFORMATION

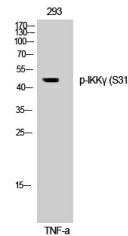
Gene ID	8517
Gene Symbol	IKBK
Uniprot ID	NEMO_HUMAN
Immunogen	The antiserum was produced against synthesized peptide derived from human IKK-gamma around the phosphorylation site of Ser31 at amino acid range 16-65
Immunogen Region	10-90
Specificity	Phospho-IKBKG-Ser31 polyclonal antibody (Nf-Kappa-B Essential Modulator) binds to endogenous Nf-Kappa-B Essential Modulator at the amino acid region 10-90 only when phosphorylated at Ser31.
Immunogen Sequence	



Immunohistochemistry analysis of paraffin-embedded human breast carcinoma, using IKK-gamma (Phospho-Ser31) Antibody. The picture on the right is blocked with the phospho peptide.



Western blot analysis of lysates from 293 cells treated with TNF- α 20ng/ml 5', using IKK-gamma (Phospho-Ser31) Antibody. The lane on the right is blocked with the phospho peptide.



Western blot analysis of 293 cells using Phospho-IKK Gamma (S31) Polyclonal Antibody

This product is suitable for in-vitro studies under the RESEARCH USE ONLY [RUO] licence. This product must not be used as for diagnostic or other medical purposes.
St John's Laboratory Ltd, Knowledge Dock Business Centre, University Way, London, E16 2RD | Tel: 0208 223 3081