

## Anti-Phospho-IKKB-Tyr188 antibody (130-210) (STJ90797)

STJ90797

### GENERAL INFORMATION

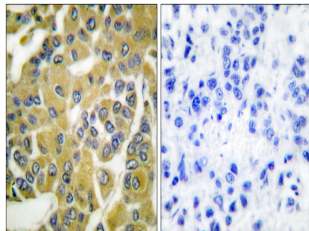
|                          |   |
|--------------------------|---|
| <b>Product Type</b>      | Primary antibodies  |
| <b>Short Description</b> | Rabbit polyclonal antibody anti-Phospho-Inhibitor Of Nuclear Factor Kappa-B Kinase Subunit Beta-Tyr188 (130-210) is suitable for use in Western Blot, Immunohistochemistry, Immunofluorescence and ELISA research applications. |
| <b>Applications</b>      | WB, IHC-P, IF-P, ELISA  |
| <b>Host/Source</b>       | Rabbit  |
| <b>Reactivity</b>        | Human, Mouse, Rat, Monkey   |

### PRODUCT PROPERTIES

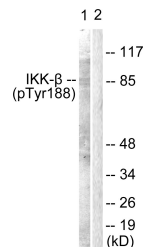
|                            |  |
|----------------------------|--|
| <b>Clonality</b>           | Polyclonal   |
| <b>Clone ID</b>            |  |
| <b>Concentration</b>       | 1 mg/mL  |
| <b>Conjugation</b>         | Unconjugated   |
| <b>Purification</b>        | The antibody was affinity-purified from rabbit anti-serum by affinity-chromatography.          |
| <b>Dilution Range</b>      | WB 1:500-1:2000<br>IHC 1:100-1:300<br>ELISA 1:10000  |
| <b>Formulation</b>         | PBS, 50% Glycerol, 0.5% BSA and 0.02% Sodium Azide.  |
| <b>Isotype</b>             | IgG  |
| <b>Storage Instruction</b> | Store at -20°C for up to 1 year from the date of receipt, and avoid repeat freeze-thaw cycles. |

### TARGET INFORMATION

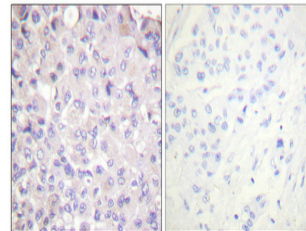
|                           |  |
|---------------------------|--|
| <b>Gene ID</b>            | 3551   |
| <b>Gene Symbol</b>        | IKKB   |
| <b>Uniprot ID</b>         | IKKB_HUMAN   |
| <b>Immunogen</b>          | The antiserum was produced against synthesized peptide derived from human IKK-beta around the phosphorylation site of Tyr188 at amino acid range 161-210   |
| <b>Immunogen Region</b>   | 130-210  |
| <b>Specificity</b>        | Phospho-IKKB-Tyr188 polyclonal antibody (Inhibitor Of Nuclear Factor Kappa-B Kinase Subunit Beta) binds to endogenous Inhibitor Of Nuclear Factor Kappa-B Kinase Subunit Beta at the amino acid region 130-210 only when phosphorylated at Tyr188. |
| <b>Immunogen Sequence</b> |  |



Immunohistochemistry analysis of paraffin-embedded human breast carcinoma, using IKK-beta (Phospho-Tyr188) Antibody. The picture on the right is blocked with the phospho peptide.



Western blot analysis of lysates from COS7 cells, using IKK-beta (Phospho-Tyr188) Antibody. The lane on the right is blocked with the phospho peptide.



Immunohistochemical analysis of paraffin-embedded Human breast cancer. Antibody was diluted at 1:100 (4°C overnight). High-pressure and temperature Tris-EDTA, pH8.0 was used for antigen retrieval. Negative control (right) obtained from antibody was pre-absorbed by immunogen peptide.