

Anti-Phospho-ARHGAP35-Tyr1105 antibody (1040-1120) (STJ90795)

STJ90795

GENERAL INFORMATION

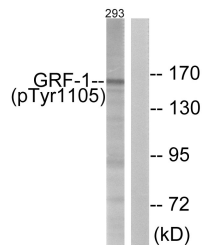
Product Type	Primary antibodies
Short Description	Rabbit polyclonal antibody anti-Phospho-Rho Gtpase-Activating Protein 35-Tyr1105 (1040-1120) is suitable for use in Western Blot, Immunohistochemistry, Immunofluorescence and ELISA research applications.
Applications	WB, IHC-P, IF-P, ELISA
Host/Source	Rabbit
Reactivity	Human, Mouse, Rat

PRODUCT PROPERTIES

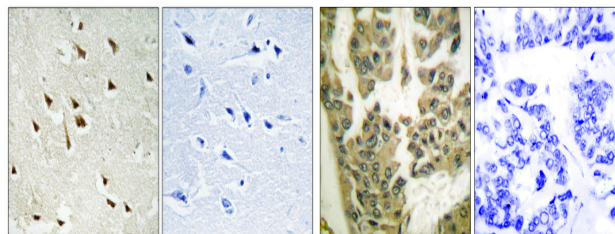
Clonality	Polyclonal
Clone ID	
Concentration	1 mg/mL
Conjugation	Unconjugated
Purification	The antibody was affinity-purified from rabbit anti-serum by affinity-chromatography.
Dilution Range	WB 1:500-1:2000 IHC 1:100-1:300 ELISA 1:10000
Formulation	PBS, 50% Glycerol, 0.5% BSA and 0.02% Sodium Azide.
Isotype	IgG
Storage Instruction	Store at -20°C for up to 1 year from the date of receipt, and avoid repeat freeze-thaw cycles.

TARGET INFORMATION

Gene ID	2909
Gene Symbol	ARHGAP35
Uniprot ID	RHG35_HUMAN
Immunogen	The antiserum was produced against synthesized peptide derived from human GRF-1 around the phosphorylation site of Tyr1105 at amino acid range 1071-1120
Immunogen Region	1040-1120
Specificity	Phospho-ARHGAP35-Tyr1105 polyclonal antibody (Rho Gtpase-Activating Protein 35) binds to endogenous Rho Gtpase-Activating Protein 35 at the amino acid region 1040-1120 only when phosphorylated at Tyr1105.
Immunogen Sequence	

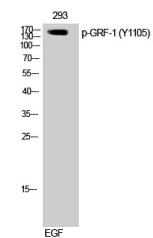


Western blot analysis of lysates from 293 cells treated with EGF 200ng/ml 30', using GRF-1 (Phospho-Tyr1105) Antibody. The lane on the right is blocked with the phospho peptide.



Immunohistochemical analysis of paraffin-embedded Human brain. Antibody was diluted at 1:100 (4°C overnight). High-pressure and temperature Tris-EDTA, pH8.0 was used for antigen retrieval. Negative control (right) obtained from antibody was pre-absorbed by immunogen peptide.

Immunohistochemistry analysis of paraffin-embedded human breast carcinoma, using GRF-1 (Phospho-Tyr1105) Antibody. The picture on the right is blocked with the phospho peptide.



Western blot analysis of 3T3 cells using Phospho-GRF-1 (Y1105) Polyclonal Antibody