

Anti-Phospho-FOS-Ser362 antibody (300-380) (STJ90791)

STJ90791

GENERAL INFORMATION

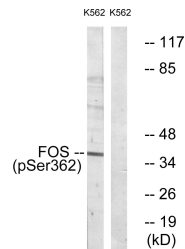
Product Type	Primary antibodies
Short Description	Rabbit polyclonal antibody anti-Phospho-Proto-Oncogene C-Fos-Ser362 (300-380) is suitable for use in Western Blot, Immunohistochemistry, Immunofluorescence and ELISA research applications.
Applications	WB, IHC-P, IF-P, ELISA
Host/Source	Rabbit
Reactivity	Human, Mouse, Rat

PRODUCT PROPERTIES

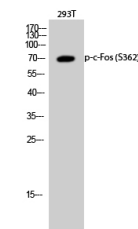
Clonality	Polyclonal
Clone ID	
Concentration	1 mg/mL
Conjugation	Unconjugated
Purification	The antibody was affinity-purified from rabbit anti-serum by affinity-chromatography.
Dilution Range	WB 1:500-1:2000 IHC 1:100-1:300 ELISA 1:10000
Formulation	PBS, 50% Glycerol, 0.5% BSA and 0.02% Sodium Azide.
Isotype	IgG
Storage Instruction	Store at 20°C for up to 1 year from the date of receipt, and avoid repeat freeze-thaw cycles.

TARGET INFORMATION

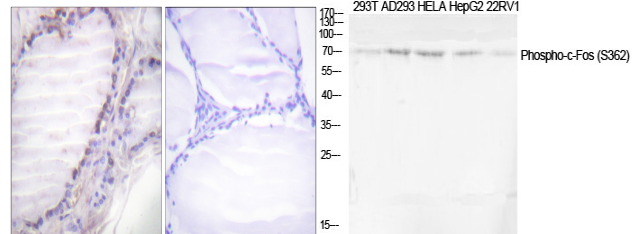
Gene ID	2353
Gene Symbol	FOS
Uniprot ID	FOS_HUMAN
Immunogen	The antiserum was produced against synthesized peptide derived from human Fos around the phosphorylation site of Ser362 at amino acid range 331-380
Immunogen Region	300-380
Specificity	Phospho-FOS-Ser362 polyclonal antibody (Proto-Oncogene C-Fos) binds to endogenous Proto-Oncogene C-Fos at the amino acid region 300-380 only when phosphorylated at Ser362.
Immunogen Sequence	



Western blot analysis of lysates from K562 cells treated with forskolin 40nM 30', using Fos (Phospho-Ser362) Antibody. The lane on the right is blocked with the phospho peptide.



Western blot analysis of 293T cells using Phospho-c-Fos (S362) Polyclonal Antibody diluted at 1: 2000 cells nucleus extracted by Minute TM Cytoplasmic and Nuclear Fractionation kit (SC-003, Inventibiotec, MN, USA).



Western blot analysis of various cells using Phospho-c-Fos (S362) Polyclonal Antibody diluted at 1: 2000 cells nucleus extracted by Minute TM Cytoplasmic and Nuclear Fractionation kit (SC-003, Inventibiotec, MN, USA).

This product is suitable for in-vitro studies under the RESEARCH USE ONLY [RUO] licence. This product must not be used as for diagnostic or other medical purposes.
St John's Laboratory Ltd, Knowledge Dock Business Centre, University Way, London, E16 2RD | Tel: 0208 223 3081