

Anti-Phospho-ACACA-Ser80 antibody (20-100) (STJ90780)

STJ90780

GENERAL INFORMATION

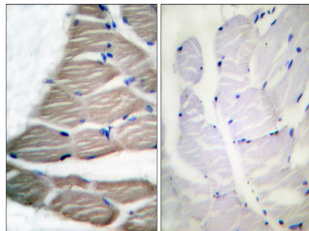
Product Type	Primary antibodies
Short Description	Rabbit polyclonal antibody anti-Phospho-Acetyl-Coa Carboxylase 1-Ser80 (20-100) is suitable for use in Western Blot, Immunohistochemistry, Immunofluorescence and ELISA research applications.
Applications	WB, IHC-P, IF-P, ELISA
Host/Source	Rabbit
Reactivity	Human, Mouse, Rat

PRODUCT PROPERTIES

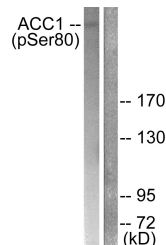
Clonality	Polyclonal
Clone ID	
Concentration	1 mg/mL
Conjugation	Unconjugated
Purification	The antibody was affinity-purified from rabbit anti-serum by affinity-chromatography.
Dilution	WB 1:500-1:2000
Range	IHC 1:100-1:300 ELISA 1:10000
Formulation	PBS, 50% Glycerol, 0.5% BSA and 0.02% Sodium Azide.
Isotype	IgG
Storage Instruction	Store at -20°C for up to 1 year from the date of receipt, and avoid repeat freeze-thaw cycles.

TARGET INFORMATION

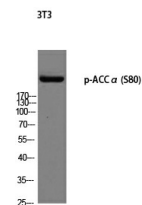
Gene ID	31
Gene Symbol	ACACA
Uniprot ID	ACACA_HUMAN
Immunogen	The antiserum was produced against synthesized peptide derived from human ACC1 around the phosphorylation site of Ser80 at amino acid range 46-95
Immunogen Region	20-100
Specificity	Phospho-ACACA-Ser80 polyclonal antibody (Acetyl-Coa Carboxylase 1) binds to endogenous Acetyl-Coa Carboxylase 1 at the amino acid region 20-100 only when phosphorylated at Ser80.
Immunogen Sequence	



Immunohistochemistry analysis of paraffin-embedded human breast carcinoma, using ACC1 (Phospho-Ser80) Antibody. The picture on the right is blocked with the phospho peptide.



Western blot analysis of lysates from K562 cells treated with Insulin 0.01U/ml 15', using ACC1 (Phospho-Ser80) Antibody. The lane on the right is blocked with the phospho peptide.



Western blot analysis of 3T3 using p-ACC Alpha (S80) antibody. Antibody was diluted at 1:1000