

Anti-Phospho-Abl1/2-Tyr393/439 antibody (330-410) (STJ90779)

STJ90779

GENERAL INFORMATION

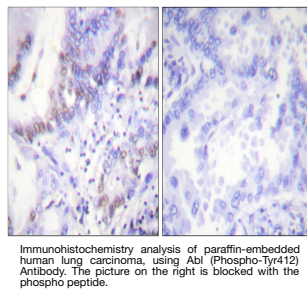
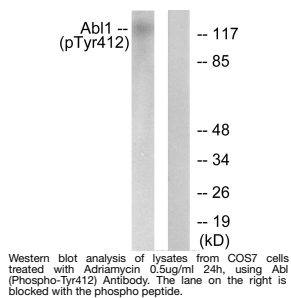
Product Type	Primary antibodies
Short Description	Rabbit polyclonal antibody anti-Phospho-Tyrosine-protein kinase ABL1 and Tyrosine-protein kinase ABL2-Tyr393/439 (330-410) is suitable for use in Western Blot, Immunohistochemistry, Immunofluorescence and ELISA research applications.
Applications	WB, IHC-P, IF-P, ELISA
Host/Source	Rabbit
Reactivity	Human, Mouse, Monkey

PRODUCT PROPERTIES

Clonality	Polyclonal
Clone ID	
Concentration	1 mg/mL
Conjugation	Unconjugated
Purification	The antibody was affinity-purified from rabbit anti-serum by affinity-chromatography.
Dilution	WB 1:500-1:2000
Range	IHC 1:100-1:300 ELISA 1:10000
Formulation	PBS, 50% Glycerol, 0.5% BSA and 0.02% Sodium Azide.
Isotype	IgG
Storage Instruction	Store at -20°C for up to 1 year from the date of receipt, and avoid repeat freeze-thaw cycles.

TARGET INFORMATION

Gene ID	25 27
Gene Symbol	ABL1 ABL2
Uniprot ID	ABL1_HUMAN ABL2_HUMAN
Immunogen	The antiserum was produced against synthesized peptide derived from human Abl around the phosphorylation site of Tyr412 at amino acid range 361-410
Immunogen Region	330-410
Specificity	Phospho-Abl1/2-Tyr393/439 polyclonal antibody (Tyrosine-protein kinase ABL1 and Tyrosine-protein kinase ABL2) binds to endogenous Tyrosine-protein kinase ABL1 and Tyrosine-protein kinase ABL2 at the amino acid region 330-410 only when phosphorylated
Immunogen Sequence	



This product is suitable for in-vitro studies under the RESEARCH USE ONLY [RUO] licence. This product must not be used as for diagnostic or other medical purposes.
St John's Laboratory Ltd, Knowledge Dock Business Centre, University Way, London, E16 2RD | Tel: 0208 223 3081