

Anti-Phospho-VASP-Ser157 antibody (100-180) (STJ90777)

STJ90777

GENERAL INFORMATION

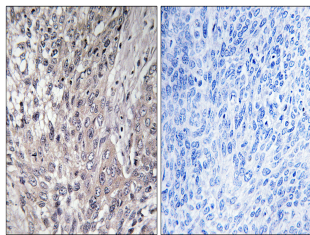
Product Type	Primary antibodies
Short Description	Rabbit polyclonal antibody anti-Phospho-Vasodilator-Stimulated Phosphoprotein-Ser157 (100-180) is suitable for use in Western Blot, Immunohistochemistry, Immunofluorescence and ELISA research applications.
Applications	WB, IHC-P, IF-P, ELISA
Host/Source	Rabbit
Reactivity	Human, Mouse, Rat

PRODUCT PROPERTIES

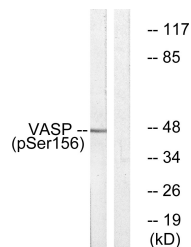
Clonality	Polyclonal
Clone ID	
Concentration	1 mg/mL
Conjugation	Unconjugated
Purification	The antibody was affinity-purified from rabbit anti-serum by affinity-chromatography.
Dilution Range	WB 1:500-1:2000 IHC 1:100-1:300 ELISA 1:5000
Formulation	PBS, 50% Glycerol, 0.5% BSA and 0.02% Sodium Azide.
Isotype	IgG
Storage Instruction	Store at -20°C for up to 1 year from the date of receipt, and avoid repeat freeze-thaw cycles.

TARGET INFORMATION

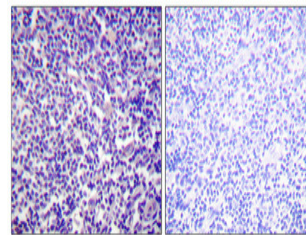
Gene ID	7408
Gene Symbol	VASP
Uniprot ID	VASP_HUMAN
Immunogen	Synthesized phospho-peptide around the phosphorylation site of human VASP (phospho Ser157)
Immunogen Region	100-180
Specificity	Phospho-VASP-Ser157 polyclonal antibody (Vasodilator-Stimulated Phosphoprotein) binds to endogenous Vasodilator-Stimulated Phosphoprotein at the amino acid region 100-180 only when phosphorylated at Ser157.
Immunogen Sequence	



Immunohistochemistry analysis of paraffin-embedded human breast cancer, using VASP (Phospho-Ser157) Antibody. The picture on the right is blocked with the VASP (Phospho-Ser157) peptide.



Western blot analysis of VASP (Phospho-Ser157) Antibody. The lane on the right is blocked with the VASP (Phospho-Ser157) peptide.



Immunohistochemical analysis of paraffin-embedded Human tonsil. Antibody was diluted at 1:100 (4°C overnight). High-pressure and temperature Tris-EDTA, pH8.0 was used for antigen retrieval. Negative control (right) obtained from antibody was pre-absorbed by immunogen peptide.

This product is suitable for in-vitro studies under the RESEARCH USE ONLY [RUO] licence. This product must not be used as for diagnostic or other medical purposes.
St John's Laboratory Ltd, Knowledge Dock Business Centre, University Way, London, E16 2RD | Tel: 0208 223 3081