

Anti-Phospho-SYK-Tyr525 antibody (460-540) (STJ90775)

STJ90775

GENERAL INFORMATION

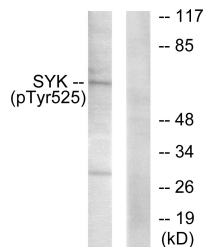
Product Type	Primary antibodies
Short Description	Rabbit polyclonal antibody anti-Phospho-Tyrosine-Protein Kinase Syk-Tyr525 (460-540) is suitable for use in Western Blot, Immunohistochemistry, Immunofluorescence and ELISA research applications.
Applications	WB, IHC-P, IF-P, ELISA
Host/Source	Rabbit
Reactivity	Human, Mouse, Rat, Monkey

PRODUCT PROPERTIES

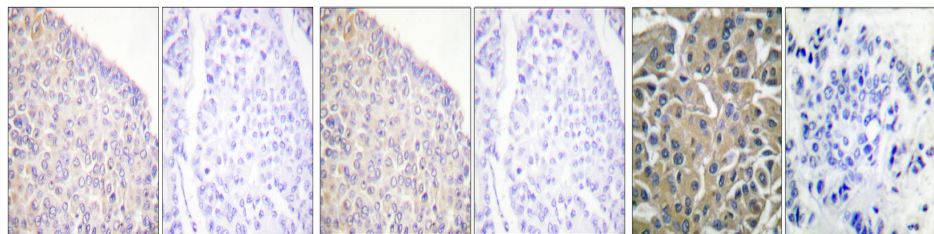
Clonality	Polyclonal
Clone ID	
Concentration	1 mg/mL
Conjugation	Unconjugated
Purification	The antibody was affinity-purified from rabbit anti-serum by affinity-chromatography.
Dilution Range	WB 1:500-1:2000 IHC 1:100-1:300 ELISA 1:20000
Formulation	PBS, 50% Glycerol, 0.5% BSA and 0.02% Sodium Azide.
Isotype	IgG
Storage Instruction	Store at -20°C for up to 1 year from the date of receipt, and avoid repeat freeze-thaw cycles.

TARGET INFORMATION

Gene ID	6850
Gene Symbol	SYK
Uniprot ID	KSYK_HUMAN
Immunogen	The antiserum was produced against synthesized peptide derived from human SYK around the phosphorylation site of Tyr525 at amino acid range 491-540
Immunogen Region	460-540
Specificity	Phospho-SYK-Tyr525 polyclonal antibody (Tyrosine-Protein Kinase Syk) binds to endogenous Tyrosine-Protein Kinase Syk at the amino acid region 460-540 only when phosphorylated at Tyr525.
Immunogen Sequence	



Western blot analysis of lysates from A549 cells, using SYK (Phospho-Tyr525) Antibody. The lane on the right is blocked with the phospho peptide.



Immunohistochemistry analysis of paraffin-embedded human breast carcinoma, using SYK (Phospho-Tyr525) Antibody. The picture on the right is blocked with the phospho peptide.

Immunohistochemical analysis of paraffin-embedded Human breast cancer. Antibody was diluted at 1:100 (4°C overnight). High-pressure and temperature Tris-EDTA, pH8.0 was used for antigen retrieval. Negative control (right) obtained from antibody was pre-absorbed by immunogen peptide.

Immunohistochemical analysis of paraffin-embedded Human breast cancer. Antibody was diluted at 1:100 (4°C overnight). High-pressure and temperature Tris-EDTA, pH8.0 was used for antigen retrieval. Negative control (right) obtained from antibody was pre-absorbed by immunogen peptide.

This product is suitable for in-vitro studies under the RESEARCH USE ONLY [RUO] licence. This product must not be used as for diagnostic or other medical purposes.
St John's Laboratory Ltd, Knowledge Dock Business Centre, University Way, London, E16 2RD | Tel: 0208 223 3081