

Anti-Phospho-STAT2-Tyr690 antibody (630-710) (STJ90772)

STJ90772

GENERAL INFORMATION

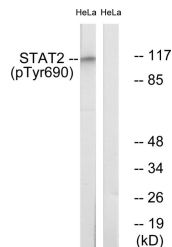
Product Type	Primary antibodies
Short Description	Rabbit polyclonal antibody anti-Phospho-Signal Transducer And Activator Of Transcription 2-Tyr690 (630-710) is suitable for use in Western Blot, Immunohistochemistry, Immunofluorescence and ELISA research applications.
Applications	WB, IHC-P, IF-P, ELISA
Host/Source	Rabbit
Reactivity	Human, Rat

PRODUCT PROPERTIES

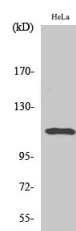
Clonality	Polyclonal
Clone ID	
Concentration	1 mg/mL
Conjugation	Unconjugated
Purification	The antibody was affinity-purified from rabbit anti-serum by affinity-chromatography.
Dilution Range	WB 1:500-1:2000 IHC 1:100-1:300 ELISA 1:20000
Formulation	PBS, 50% Glycerol, 0.5% BSA and 0.02% Sodium Azide.
Isotype	IgG
Storage Instruction	Store at -20°C for up to 1 year from the date of receipt, and avoid repeat freeze-thaw cycles.

TARGET INFORMATION

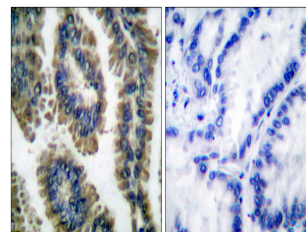
Gene ID	6773
Gene Symbol	STAT2
Uniprot ID	STAT2_HUMAN
Immunogen	The antiserum was produced against synthesized peptide derived from human STAT2 around the phosphorylation site of Tyr690 at amino acid range 656-705
Immunogen Region	630-710
Specificity	Phospho-STAT2-Tyr690 polyclonal antibody (Signal Transducer And Activator Of Transcription 2) binds to endogenous Signal Transducer And Activator Of Transcription 2 at the amino acid region 630-710 only when phosphorylated at Tyr690.
Immunogen Sequence	



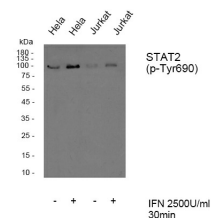
Western blot analysis of lysates from HeLa cells treated with IFN 2500U/ml 30', using STAT2 (Phospho-Tyr690) Antibody. The lane on the right is blocked with the phospho peptide.



Western blot analysis of various cells using Phospho-STAT2 (Y690) Polyclonal Antibody



Immunohistochemistry analysis of paraffin-embedded human lung carcinoma, using STAT2 (Phospho-Tyr690) Antibody. The picture on the right is blocked with the phospho peptide.



Western blot analysis of Stat2 (phospho Tyr690) Polyclonal Antibody, using HeLa, Jurkat cell treated or untreated with IFN 2500U/ml 30', 4°C over night, secondary antibody (cat: NA was diluted at 1:10000, 37°C 1hour.

This product is suitable for in-vitro studies under the RESEARCH USE ONLY [RUO] licence. This product must not be used as for diagnostic or other medical purposes.
St John's Laboratory Ltd, Knowledge Dock Business Centre, University Way, London, E16 2RD | Tel: 0208 223 3081