

Anti-Phospho-PTK2B-Tyr580 antibody (520-600) (STJ90770)

STJ90770

GENERAL INFORMATION

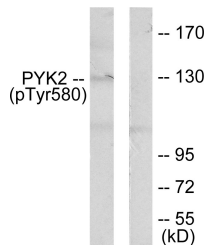
Product Type	Primary antibodies
Short Description	Rabbit polyclonal antibody anti-Phospho-Protein-Tyrosine Kinase 2-Beta-Tyr580 (520-600) is suitable for use in Western Blot, Immunohistochemistry, Immunofluorescence and ELISA research applications.
Applications	WB, IHC-P, IF-P, ELISA
Host/Source	Rabbit
Reactivity	Human, Mouse, Rat

PRODUCT PROPERTIES

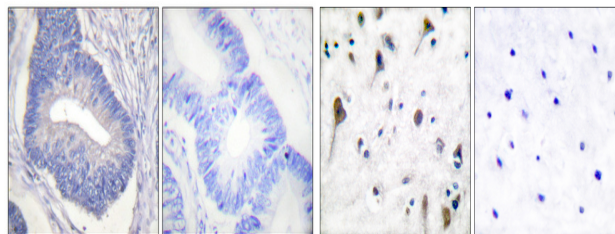
Clonality	Polyclonal
Clone ID	
Concentration	1 mg/mL
Conjugation	Unconjugated
Purification	The antibody was affinity-purified from rabbit anti-serum by affinity-chromatography.
Dilution Range	WB 1:500-1:2000 IHC 1:100-1:300 ELISA 1:40000
Formulation	PBS, 50% Glycerol, 0.5% BSA and 0.02% Sodium Azide.
Isotype	IgG
Storage Instruction	Store at -20°C for up to 1 year from the date of receipt, and avoid repeat freeze-thaw cycles.

TARGET INFORMATION

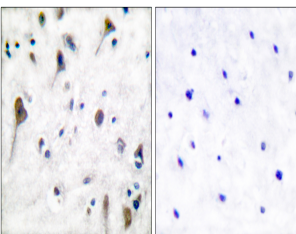
Gene ID	2185
Gene Symbol	PTK2B
Uniprot ID	FAK2_HUMAN
Immunogen	The antiserum was produced against synthesized peptide derived from human PYK2 around the phosphorylation site of Tyr580 at amino acid range 546-595
Immunogen Region	520-600
Specificity	Phospho-PTK2B-Tyr580 polyclonal antibody (Protein-Tyrosine Kinase 2-Beta) binds to endogenous Protein-Tyrosine Kinase 2-Beta at the amino acid region 520-600 only when phosphorylated at Tyr580.
Immunogen Sequence	



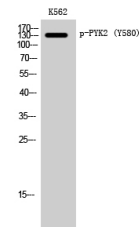
Western blot analysis of lysates from K562 cells, using PYK2 (Phospho-Tyr580) Antibody. The lane on the right is blocked with the phospho peptide.



Immunohistochemical analysis of paraffin-embedded Human colon cancer. Antibody was diluted at 1:100 (4°C overnight). High-pressure and temperature Tris-EDTA, pH8.0 was used for antigen retrieval. Negative control (right) obtained from antibody was pre-absorbed by immunogen peptide.



Immunohistochemistry analysis of paraffin-embedded human brain, using PYK2 (Phospho-Tyr580) Antibody. The picture on the right is blocked with the phospho peptide.



Western blot analysis of K562 cells using Phospho-PYK2 (Y580) Polyclonal Antibody

This product is suitable for in-vitro studies under the RESEARCH USE ONLY [RUO] licence. This product must not be used as for diagnostic or other medical purposes.
St John's Laboratory Ltd, Knowledge Dock Business Centre, University Way, London, E16 2RD | Tel: 0208 223 3081