

Anti-Phospho-PLCB3-Ser1105 antibody (1040-1120) (STJ90766)

STJ90766

GENERAL INFORMATION

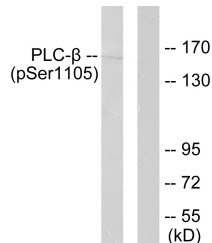
Product Type	Primary antibodies
Short Description	Rabbit polyclonal antibody anti-Phospho-1-Phosphatidylinositol 4-5-Bisphosphate Phosphodiesterase Beta-3-Ser1105 (1040-1120) is suitable for use in Western Blot, Immunohistochemistry, Immunofluorescence and ELISA research applications.
Applications	WB, IHC-P, IF-P, ELISA
Host/Source	Rabbit
Reactivity	Human, Mouse, Rat

PRODUCT PROPERTIES

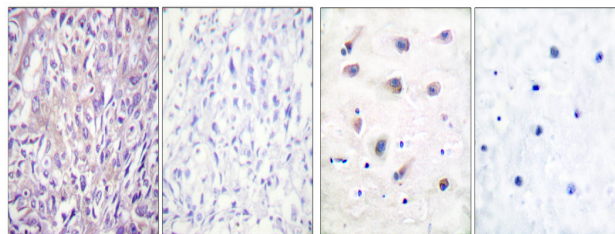
Clonality	Polyclonal
Clone ID	
Concentration	1 mg/mL
Conjugation	Unconjugated
Purification	The antibody was affinity-purified from rabbit anti-serum by affinity-chromatography.
Dilution Range	WB 1:500-1:2000 IHC 1:100-1:300 ELISA 1:10000
Formulation	PBS, 50% Glycerol, 0.5% BSA and 0.02% Sodium Azide.
Isotype	IgG
Storage Instruction	Store at -20°C for up to 1 year from the date of receipt, and avoid repeat freeze-thaw cycles.

TARGET INFORMATION

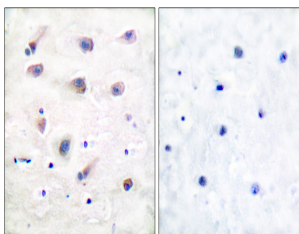
Gene ID	5331
Gene Symbol	PLCB3
Uniprot ID	PLCB3_HUMAN
Immunogen	The antiserum was produced against synthesized peptide derived from human PLCB3 around the phosphorylation site of Ser1105 at amino acid range 1071-1120
Immunogen Region	1040-1120
Specificity	Phospho-PLCB3-Ser1105 polyclonal antibody (1-Phosphatidylinositol 4-5-Bisphosphate Phosphodiesterase Beta-3) binds to endogenous 1-Phosphatidylinositol 4-5-Bisphosphate Phosphodiesterase Beta-3 at the amino acid region 1040-1120 only when phosphoryla
Immunogen Sequence	



Western blot analysis of lysates from A431 cells, using PLCB3 (Phospho-Ser1105) Antibody. The lane on the right is blocked with the phospho peptide.



Immunohistochemical analysis of paraffin-embedded Human breast cancer. Antibody was diluted at 1:100 (4°C overnight), high-pressure and temperature Tris-EDTA, pH8.0 was used for antigen retrieval. Negative control (right) obtained from antibody was pre-absorbed by immunogen peptide.



Immunohistochemistry analysis of paraffin-embedded human brain, using PLCB3 (Phospho-Ser1105) Antibody. The picture on the right is blocked with the phospho peptide.



Western blot analysis of various cells using Phospho-PLC Beta 3 (S1105) Polyclonal Antibody diluted at 1:1000

This product is suitable for in-vitro studies under the RESEARCH USE ONLY [RUO] licence. This product must not be used as for diagnostic or other medical purposes.
St John's Laboratory Ltd, Knowledge Dock Business Centre, University Way, London, E16 2RD | Tel: 0208 223 3081