

Anti-Phospho-CEBPA-Ser21 antibody (1-80) (STJ90757)

STJ90757

GENERAL INFORMATION

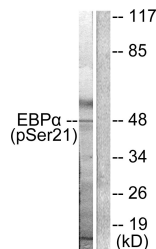
Product Type	Primary antibodies
Short Description	Rabbit polyclonal antibody anti-Phospho-Ccaat/Enhancer-Binding Protein Alpha-Ser21 (1-80) is suitable for use in Western Blot, Immunohistochemistry, Immunofluorescence and ELISA research applications.
Applications	WB, IHC-P, IF-P, ELISA
Host/Source	Rabbit
Reactivity	Human, Mouse, Rat

PRODUCT PROPERTIES

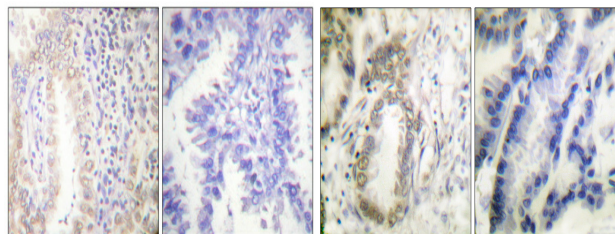
Clonality	Polyclonal
Clone ID	
Concentration	1 mg/mL
Conjugation	Unconjugated
Purification	The antibody was affinity-purified from rabbit anti-serum by affinity-chromatography.
Dilution Range	WB 1:500-1:2000 IHC 1:100-1:300 ELISA 1:5000
Formulation	PBS, 50% Glycerol, 0.5% BSA and 0.02% Sodium Azide.
Isotype	IgG
Storage Instruction	Store at -20°C for up to 1 year from the date of receipt, and avoid repeat freeze-thaw cycles.

TARGET INFORMATION

Gene ID	1050
Gene Symbol	CEBPA
Uniprot ID	CEBPA_HUMAN
Immunogen	The antiserum was produced against synthesized peptide derived from human C/EBP-alpha around the phosphorylation site of Ser21 at amino acid range 6-55
Immunogen Region	1-80
Specificity	Phospho-CEBPA-Ser21 polyclonal antibody (Ccaat/Enhancer-Binding Protein Alpha) binds to endogenous Ccaat/Enhancer-Binding Protein Alpha at the amino acid region 1-80 only when phosphorylated at Ser21.
Immunogen Sequence	

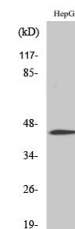


Western blot analysis of lysates from HepG2 cells treated with EGF 200ng/ml 5', using C/EBP-alpha (Phospho-Ser21) Antibody. The lane on the right is blocked with the phospho peptide.



Immunohistochemical analysis of paraffin-embedded Human lung cancer. Antibody was diluted at 1:100 (4°C overnight). High-pressure and temperature Tris-EDTA, pH8.0 was used for antigen retrieval. Negative control (right) obtained from antibody was pre-absorbed by immunogen peptide.

Immunohistochemistry analysis of paraffin-embedded human lung carcinoma, using C/EBP-alpha (Phospho-Ser21) Antibody. The picture on the right is blocked with the phospho peptide.



Western blot analysis of various cells using Phospho-C/EBP Alpha (S21) Polyclonal Antibody cells nucleus extracted by Minute TM Cyttoplasmic and Nuclear Fractionation kit (SC-003, Inventiotech, MN, USA).

This product is suitable for in-vitro studies under the RESEARCH USE ONLY [RUO] licence. This product must not be used as for diagnostic or other medical purposes.
St John's Laboratory Ltd, Knowledge Dock Business Centre, University Way, London, E16 2RD | Tel: 0208 223 3081