

Anti-Phospho-LIMK-1/2-Thr508/505 antibody (450-530) (STJ90751)

STJ90751

GENERAL INFORMATION

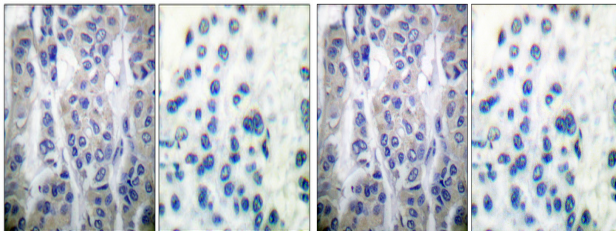
Product Type	Primary antibodies
Short Description	Rabbit polyclonal antibody anti-Phospho-LIM domain kinase 1 and LIM domain kinase 2-Thr508/505 (450-530) is suitable for use in Western Blot, Immunohistochemistry, Immunofluorescence and ELISA research applications.
Applications	WB, IHC-P, IF-P, ELISA
Host/Source	Rabbit
Reactivity	Human, Mouse, Rat

PRODUCT PROPERTIES

Clonality	Polyclonal
Clone ID	
Concentration	1 mg/mL
Conjugation	Unconjugated
Purification	The antibody was affinity-purified from rabbit anti-serum by affinity-chromatography.
Dilution Range	WB 1:500-1:2000 IHC 1:100-1:300 ELISA 1:10000
Formulation	PBS, 50% Glycerol, 0.5% BSA and 0.02% Sodium Azide.
Isotype	IgG
Storage Instruction	Store at -20°C for up to 1 year from the date of receipt, and avoid repeat freeze-thaw cycles.

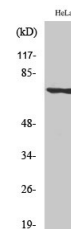
TARGET INFORMATION

Gene ID	3984 3985
Gene Symbol	LIMK1 LIMK2
Uniprot ID	LIMK1_HUMAN LIMK2_HUMAN
Immunogen	Synthesized phospho-peptide around the phosphorylation site of human LIMK-1/2 (phospho Thr508/505)
Immunogen Region	450-530
Specificity	Phospho-LIMK-1/2-Thr508/505 polyclonal antibody (LIM domain kinase 1 and LIM domain kinase 2) binds to endogenous LIM domain kinase 1 and LIM domain kinase 2 at the amino acid region 450-530 only when phosphorylated at Thr508/505.
Immunogen Sequence	



Immunohistochemical analysis of paraffin-embedded Human breast cancer. Antibody was diluted at 1:100 (4°C overnight). High-pressure and temperature Tris-EDTA, pH8.0 was used for antigen retrieval. Negative control (right) obtained from antibody was pre-absorbed by immunogen peptide.

Immunohistochemistry analysis of paraffin-embedded human breast cancer, using LIMK1/2 (Phospho-Thr508/505) Antibody. The picture on the right is blocked with the LIMK1/2 (Phospho-Thr508/505) peptide.



Western blot analysis of various cells using Phospho-LIMK-1/2 (Thr508/505) Polyclonal Antibody