

Anti-Phospho-Synaptotagmin 1/2-Ser309/306 antibody (250-330) (STJ90746)

STJ90746

GENERAL INFORMATION

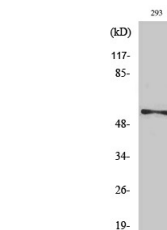
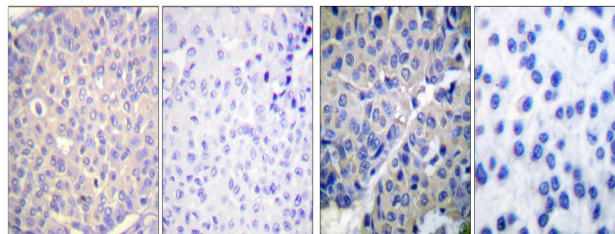
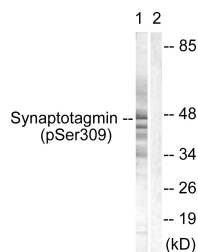
Product Type	Primary antibodies
Short Description	Rabbit polyclonal antibody anti-Phospho-Synaptotagmin-1 and Synaptotagmin-2-Ser309/306 (250-330) is suitable for use in Western Blot, Immunohistochemistry, Immunofluorescence and ELISA research applications.
Applications	WB, IHC-P, IF-P, ELISA
Host/Source	Rabbit
Reactivity	Human, Mouse, Rat

PRODUCT PROPERTIES

Clonality	Polyclonal
Clone ID	
Concentration	1 mg/mL
Conjugation	Unconjugated
Purification	The antibody was affinity-purified from rabbit anti-serum by affinity-chromatography.
Dilution Range	WB 1:500-1:2000 IHC 1:100-1:300 ELISA 1:10000
Formulation	PBS, 50% Glycerol, 0.5% BSA and 0.02% Sodium Azide.
Isotype	IgG
Storage Instruction	Store at -20°C for up to 1 year from the date of receipt, and avoid repeat freeze-thaw cycles.

TARGET INFORMATION

Gene ID	127833 6857
Gene Symbol	SYT2 SYT1
Uniprot ID	SYT2_HUMAN SYT1_HUMAN
Immunogen	The antiserum was produced against synthesized peptide derived from human Synaptotagmin around the phosphorylation site of Ser309 at amino acid range 276-325
Immunogen Region	250-330
Specificity	Phospho-Synaptotagmin 1/2-Ser309/306 polyclonal antibody (Synaptotagmin-1 and Synaptotagmin-2) binds to endogenous Synaptotagmin-1 and Synaptotagmin-2 at the amino acid region 250-330 only when phosphorylated at Ser309/306.
Immunogen Sequence	



Western blot analysis of lysates from 293 cells treated with Sobital 0.4M 30', using Synaptotagmin (Phospho-Ser309) Antibody. The lane on the right is blocked with the phospho peptide.

Immunohistochemical analysis of paraffin-embedded Human breast cancer. Antibody was diluted at 1:100 (4°C overnight). High-pressure and temperature Tris-EDTA, pH8.0 was used for antigen retrieval. Negative control (right) obtained from antibody was pre-absorbed by immunogen peptide.

Immunohistochemistry analysis of paraffin-embedded human breast carcinoma, using Synaptotagmin (Phospho-Ser309) Antibody. The picture on the right is blocked with the phospho peptide.

Western blot analysis of various cells using Phospho-Synaptotagmin 1/2 (S309/306) Polyclonal Antibody

This product is suitable for in-vitro studies under the RESEARCH USE ONLY [RUO] licence. This product must not be used as for diagnostic or other medical purposes.

St John's Laboratory Ltd, Knowledge Dock Business Centre, University Way, London, E16 2RD | Tel: 0208 223 3081