

Anti-Phospho-SMAD2-Ser467 antibody (410-490) (STJ90744)

STJ90744

GENERAL INFORMATION

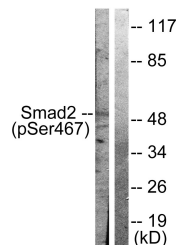
Product Type	Primary antibodies
Short Description	Rabbit polyclonal antibody anti-Phospho-Mothers Against Decapentaplegic Homolog 2-Ser467 (410-490) is suitable for use in Western Blot, Immunohistochemistry, Immunofluorescence and ELISA research applications.
Applications	WB, IHC-P, IF-P, ELISA
Host/Source	Rabbit
Reactivity	Human, Mouse, Rat

PRODUCT PROPERTIES

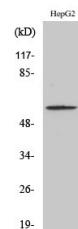
Clonality	Polyclonal
Clone ID	
Concentration	1 mg/mL
Conjugation	Unconjugated
Purification	The antibody was affinity-purified from rabbit anti-serum by affinity-chromatography.
Dilution Range	WB 1:500-1:2000 IHC 1:100-1:300 ELISA 1:5000
Formulation	PBS, 50% Glycerol, 0.5% BSA and 0.02% Sodium Azide.
Isotype	IgG
Storage Instruction	Store at -20°C for up to 1 year from the date of receipt, and avoid repeat freeze-thaw cycles.

TARGET INFORMATION

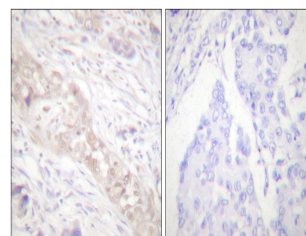
Gene ID	4087
Gene Symbol	SMAD2
Uniprot ID	SMAD2_HUMAN
Immunogen	The antiserum was produced against synthesized peptide derived from human Smad2 around the phosphorylation site of Ser467 at amino acid range 418-467
Immunogen Region	410-490
Specificity	Phospho-SMAD2-Ser467 polyclonal antibody (Mothers Against Decapentaplegic Homolog 2) binds to endogenous Mothers Against Decapentaplegic Homolog 2 at the amino acid region 410-490 only when phosphorylated at Ser467.
Immunogen Sequence	



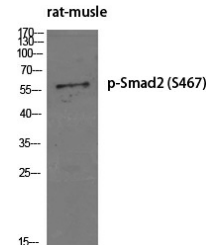
Western blot analysis of lysates from HepG2 cells treated with PMA 125ng/ml 15', using Smad2 (Phospho-Ser467) Antibody. The lane on the right is blocked with the phospho peptide.



Western blot analysis of HepG2 cells using Phospho-Smad2 (S467) Polyclonal Antibody diluted at 1: 500



Immunohistochemistry analysis of paraffin-embedded human breast carcinoma, using Smad2 (Phospho-Ser467) Antibody. The picture on the right is blocked with the phospho peptide.



Western blot analysis of various cells using Phospho-Smad2 (S467) Polyclonal Antibody diluted at 1: 500

This product is suitable for in-vitro studies under the RESEARCH USE ONLY [RUO] licence. This product must not be used as for diagnostic or other medical purposes.
St John's Laboratory Ltd, Knowledge Dock Business Centre, University Way, London, E16 2RD | Tel: 0208 223 3081