

## Anti-Phospho-PTPN11-Tyr580 antibody (520-600) (STJ90742)

STJ90742

### GENERAL INFORMATION

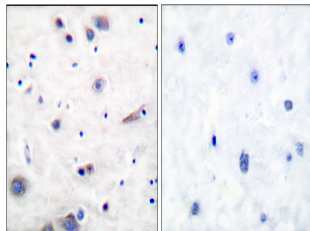
<b>Product Type</b>	Primary antibodies
<b>Short Description</b>	Rabbit polyclonal antibody anti-Phospho-Tyrosine-Protein Phosphatase Non-Receptor Type 11-Tyr580 (520-600) is suitable for use in Western Blot, Immunohistochemistry, Immunofluorescence and ELISA research applications.
<b>Applications</b>	WB, IHC-P, IF-P, ELISA
<b>Host/Source</b>	Rabbit
<b>Reactivity</b>	Human, Mouse, Rat

### PRODUCT PROPERTIES

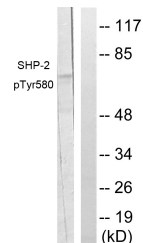
<b>Clonality</b>	Polyclonal
<b>Clone ID</b>	
<b>Concentration</b>	1 mg/mL
<b>Conjugation</b>	Unconjugated
<b>Purification</b>	The antibody was affinity-purified from rabbit anti-serum by affinity-chromatography.
<b>Dilution Range</b>	WB 1:500-1:2000 IHC 1:100-1:300 ELISA 1:40000
<b>Formulation</b>	PBS, 50% Glycerol, 0.5% BSA and 0.02% Sodium Azide.
<b>Isotype</b>	IgG
<b>Storage Instruction</b>	Store at -20°C for up to 1 year from the date of receipt, and avoid repeat freeze-thaw cycles.

### TARGET INFORMATION

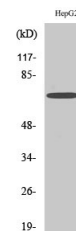
<b>Gene ID</b>	5781
<b>Gene Symbol</b>	PTPN11
<b>Uniprot ID</b>	PTN11_HUMAN
<b>Immunogen</b>	The antiserum was produced against synthesized peptide derived from human SHP-2 around the phosphorylation site of Tyr580 at amino acid range 546-595
<b>Immunogen Region</b>	520-600
<b>Specificity</b>	Phospho-PTPN11-Tyr580 polyclonal antibody (Tyrosine-Protein Phosphatase Non-Receptor Type 11) binds to endogenous Tyrosine-Protein Phosphatase Non-Receptor Type 11 at the amino acid region 520-600 only when phosphorylated at Tyr580.
<b>Immunogen Sequence</b>	



Immunohistochemistry analysis of paraffin-embedded human brain, using SHP-2 (Phospho-Tyr580) Antibody. The picture on the right is blocked with the phospho peptide.



Western blot analysis of lysates from A431 cells, using SHP-2 (Phospho-Tyr580) Antibody. The lane on the right is blocked with the phospho peptide.



Western blot analysis of various cells using Phospho-SH-PTP2 (Y580) Polyclonal Antibody

This product is suitable for in-vitro studies under the RESEARCH USE ONLY [RUO] licence. This product must not be used as for diagnostic or other medical purposes.  
St John's Laboratory Ltd, Knowledge Dock Business Centre, University Way, London, E16 2RD | Tel: 0208 223 3081