

Anti-Phospho-PTPN11-Tyr542 antibody (480-560) (STJ90741)

STJ90741

GENERAL INFORMATION

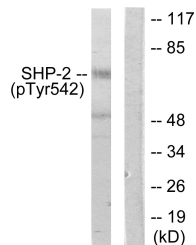
Product Type	Primary antibodies
Short Description	Rabbit polyclonal antibody anti-Phospho-Tyrosine-Protein Phosphatase Non-Receptor Type 11-Tyr542 (480-560) is suitable for use in Western Blot, Immunohistochemistry, Immunofluorescence and ELISA research applications.
Applications	WB, IHC-P, IF-P, ELISA
Host/Source	Rabbit
Reactivity	Human, Mouse, Rat

PRODUCT PROPERTIES

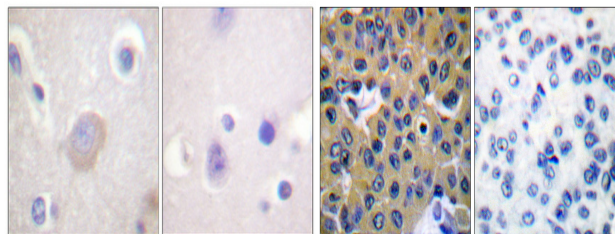
Clonality	Polyclonal
Clone ID	
Concentration	1 mg/mL
Conjugation	Unconjugated
Purification	The antibody was affinity-purified from rabbit anti-serum by affinity-chromatography.
Dilution Range	WB 1:500-1:2000 IHC 1:100-1:300 ELISA 1:40000
Formulation	PBS, 50% Glycerol, 0.5% BSA and 0.02% Sodium Azide.
Isotype	IgG
Storage Instruction	Store at -20°C for up to 1 year from the date of receipt, and avoid repeat freeze-thaw cycles.

TARGET INFORMATION

Gene ID	5781
Gene Symbol	PTPN11
Uniprot ID	PTN11_HUMAN
Immunogen	The antiserum was produced against synthesized peptide derived from human SHP-2 around the phosphorylation site of Tyr542 at amino acid range 508-557
Immunogen Region	480-560
Specificity	Phospho-PTPN11-Tyr542 polyclonal antibody (Tyrosine-Protein Phosphatase Non-Receptor Type 11) binds to endogenous Tyrosine-Protein Phosphatase Non-Receptor Type 11 at the amino acid region 480-560 only when phosphorylated at Tyr542.
Immunogen Sequence	

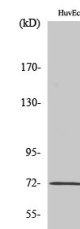


Western blot analysis of lysates from A431 cells, using SHP-2 (Phospho-Tyr542) Antibody. The lane on the right is blocked with the phospho peptide.



Immunohistochemical analysis of paraffin-embedded Human brain. Antibody was diluted at 1:100 (4°C overnight). High-pressure and temperature Tris-EDTA, pH8.0 was used for antigen retrieval. Negative control (right) obtained from antibody was pre-absorbed by immunogen peptide.

Immunohistochemistry analysis of paraffin-embedded human breast carcinoma, using SHP-2 (Phospho-Tyr542) Antibody. The picture on the right is blocked with the phospho peptide.



Western blot analysis of various cells using Phospho-SH-PTP2 (Y542) Polyclonal Antibody diluted at 1:1000

This product is suitable for in-vitro studies under the RESEARCH USE ONLY [RUO] licence. This product must not be used as for diagnostic or other medical purposes.
St John's Laboratory Ltd, Knowledge Dock Business Centre, University Way, London, E16 2RD | Tel: 0208 223 3081